

# Anti-SLC25A37 antibody



Catalog Number: 175575

## Product name

Anti-SLC25A37 antibody

## Specificity

Human, Mouse, Rat, Chicken, Dog, Pig, Cow, Horse

## Antibody description

Rabbit polyclonal antibody to SLC25A37

## Preparation

This antigen of this antibody was klh conjugated synthetic peptide derived from human mitoferrin 1 201-300/338

## Formulation

Liquid, 0.01M TBS(pH7.4) with 1% BSA, 0.03% Proclin300 and 50% Glycerol.

## Storage

Store at -20°C for one year. Avoid repeated freeze/thaw cycles.

## Clonality

Polyclonal

## Ig Type

Rabbit IgG

## Applications

WB

## Dilutions

WB:1:500-2000

## Validations

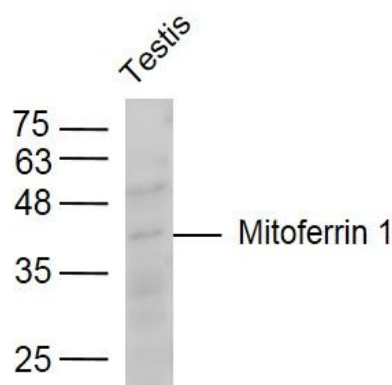


Fig1: Sample:; Testis (Mouse) Lysate at 40 ug; Primary: Anti-Mitoferrin 1 at 1/300 dilution; Secondary: IRDye800CW Goat Anti-Rabbit IgG at 1/20000 dilution; Predicted band size: 37 kD; Observed band size: 37 kD