

RCC1 antibody

Catalog Number: 114575

Product name

RCC1 antibody

WB: 1:1000-1:10000

IP: 1:500-1:5000

Specificity

Human, Mouse, Rat; other species not tested.

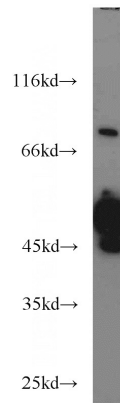
IHC: 1:20-1:200

IF: 1:20-1:200

Antibody description

RCC1 Rabbit Polyclonal antibody. Positive IHC detected in human testis tissue, human small intestine tissue. Positive IF detected in HepG2 cells. Positive WB detected in HeLa cells, HepG2 cells, mouse colon tissue, SH-SY5Y cells. Positive IP detected in HeLa cells. Observed molecular weight by Western-blot: 45-50 kDa, 68 kDa

Validations



Preparation

This antibody was obtained by immunization of RCC1 recombinant protein (Accession Number: NM_001048199). Purification method: Antigen affinity purified.

HeLa cells were subjected to SDS PAGE followed by western blot with Catalog No:114575(RCC1 antibody) at dilution of 1:1000

Formulation

PBS with 0.02% sodium azide and 50% glycerol pH 7.3.

Storage

Store at -20°C. DO NOT ALIQUOT

Clonality

Polyclonal

Ig Type

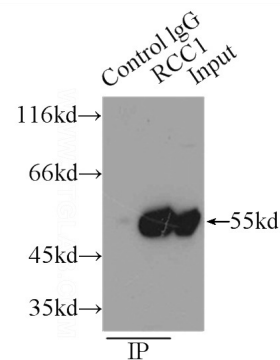
Rabbit IgG

Applications

ELISA, WB, IHC, IP, IF

Dilutions

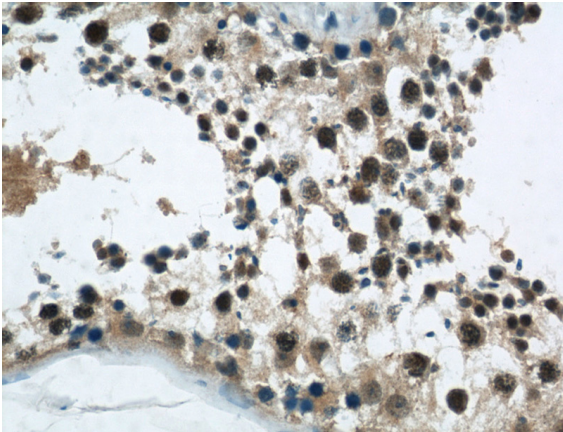
Recommended Dilution:



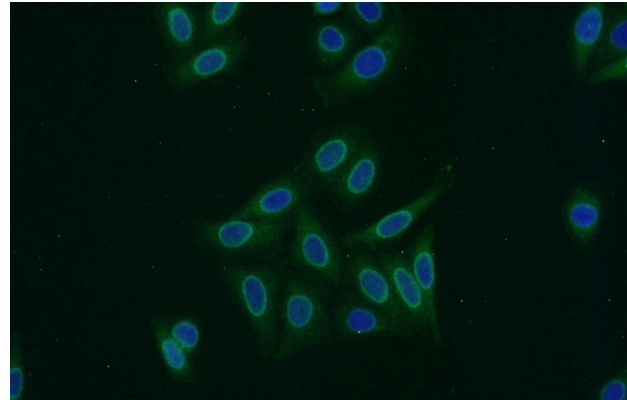
IP Result of anti-RCC1 (IP:Catalog No:114575, 3ug; Detection:Catalog No:114575 1:1500) with HeLa cells lysate 3000ug.

RCC1 antibody

Catalog Number: 114575



Immunohistochemical of paraffin-embedded human testis using Catalog No:114575(RCC1 antibody) at dilution of 1:50 (under 40x lens)



Immunofluorescent analysis of HepG2 cells using Catalog No:114575(RCC1 Antibody) at dilution of 1:50 and Alexa Fluor 488-conjugated AffiniPure Goat Anti-Rabbit IgG(H+L)