

# ME2 antibody



Catalog Number: 112575

## Product name

ME2 antibody

## Immunogen

[Human ME2 Recombinant protein \(His tag\)](#)

## Specificity

Human; other species not tested.

## Antibody description

ME2 Rabbit Polyclonal antibody. Positive IP detected in HeLa cells. Positive WB detected in K-562 cells, HeLa cells, HL-60 cells, Jurkat cells. Observed molecular weight by Western-blot: 54 kDa, 65 kDa

## Preparation

This antibody was obtained by immunization of ME2 recombinant protein (Accession Number: NM\_001168335). Purification method: Antigen affinity purified.

## Formulation

PBS with 0.1% sodium azide and 50% glycerol pH 7.3.

## Storage

Store at -20°C. DO NOT ALIQUOT

## Clonality

Polyclonal

## Ig Type

Rabbit IgG

## Applications

ELISA, WB, IP

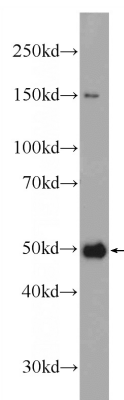
## Dilutions

Recommended Dilution:

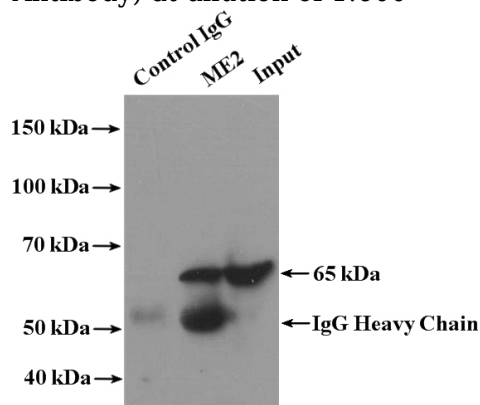
WB: 1:200-1:2000

IP: 1:200-1:2000

## Validations



K-562 cells were subjected to SDS PAGE followed by western blot with Catalog No:112575(ME2 Antibody) at dilution of 1:600



IP Result of anti-ME2 (IP:Catalog No:112575, 4ug; Detection:Catalog No:112575 1:500) with HeLa cells lysate 3200ug.