

# HYAL2 antibody



Catalog Number: 111575

## Product name

HYAL2 antibody

## Specificity

Human, Mouse, Rat; other species not tested.

## Antibody description

HYAL2 Rabbit Polyclonal antibody. Positive FC detected in HeLa cells. Positive IF detected in HeLa cells. Positive WB detected in HeLa cells. Observed molecular weight by Western-blot: 60 kDa

## Preparation

This antibody was obtained by immunization of HYAL2 recombinant protein (Accession Number: XM\_005265525). Purification method: Antigen affinity purified.

## Formulation

PBS with 0.02% sodium azide and 50% glycerol pH 7.3.

## Storage

Store at -20°C. DO NOT ALIQUOT

## Clonality

Polyclonal

## Ig Type

Rabbit IgG

## Applications

ELISA, WB, IF, FC

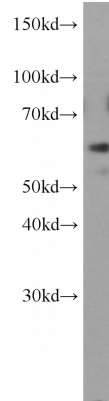
## Dilutions

Recommended Dilution:

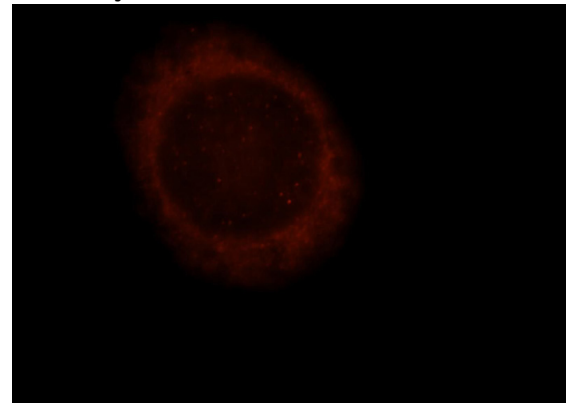
WB: 1:200-1:2000

IF: 1:10-1:100

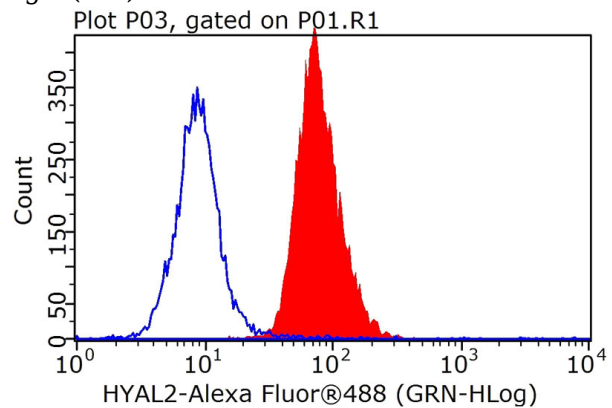
## Validations



HeLa cells were subjected to SDS PAGE followed by western blot with Catalog No:111575(HYAL2 antibody) at dilution of 1:800



Immunofluorescent analysis of HeLa cells, using HYAL2 antibody Catalog No:111575 at 1:25 dilution and Rhodamine-labeled goat anti-rabbit IgG (red).



1X10<sup>6</sup> HeLa cells were stained with 0.2ug HYAL2 antibody (Catalog No:111575, red) and

# HYAL2 antibody



Catalog Number: 111575

---

control antibody (blue). Fixed with 90% MeOH

blocked with 3% BSA (30 min). FITC-Goat anti-Rabbit IgG with dilution 1:100.