

ARSB antibody

Catalog Number: 108175

Product name

ARSB antibody

Specificity

Human, Mouse, Rat; other species not tested.

Antibody description

ARSB Rabbit Polyclonal antibody. Positive IHC detected in human placenta tissue, human breast cancer tissue, human heart tissue. Positive WB detected in HepG2 cells. Observed molecular weight by Western-blot: 44kd

Preparation

This antibody was obtained by immunization of ARSB recombinant protein (Accession Number: NM_198709). Purification method: Antigen affinity purified.

Formulation

PBS with 0.02% sodium azide and 50% glycerol pH 7.3.

Storage

Store at -20°C. DO NOT ALIQUOT

Clonality

Polyclonal

Ig Type

Rabbit IgG

Applications

ELISA, WB, IHC

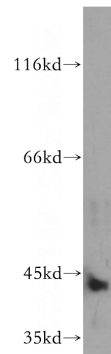
Dilutions

Recommended Dilution:

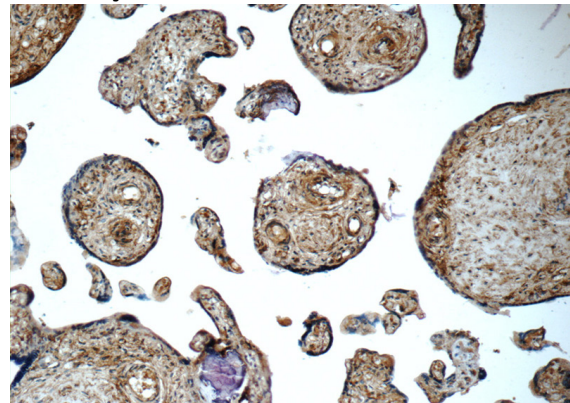
WB: 1:200-1:2000

IHC: 1:20-1:200

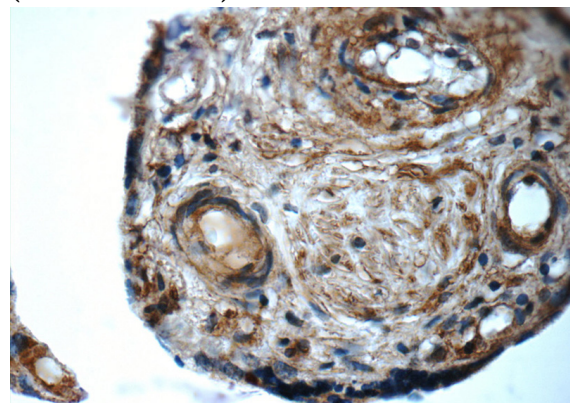
Validations



HepG2 cells were subjected to SDS PAGE followed by western blot with Catalog No:108175(ARSB antibody) at dilution of 1:300



Immunohistochemistry of paraffin-embedded human placenta tissue slide using Catalog No:108175(ARSB Antibody) at dilution of 1:50 (under 10x lens)



Immunohistochemistry of paraffin-embedded human placenta tissue slide using Catalog

ARSB antibody



Catalog Number: 108175

No:108175(ARSB Antibody) at dilution of 1:50 (under 40x lens)