

# PRDX1 antibody

Catalog Number: 114175

## Product name

PRDX1 antibody

## Specificity

Human, Mouse, Rat; other species not tested.

## Antibody description

PRDX1 Rabbit Polyclonal antibody. Positive IP detected in HeLa cells. Positive WB detected in HEK-293 cells, A549 cells, HeLa cells, MCF7 cells, mouse kidney tissue, NIH/3T3 cells, Raji cells, rat kidney tissue, RAW 264.7 cells. Positive IF detected in HepG2 cells, RAW 264.7 cells. Positive IHC detected in human breast cancer tissue, human brain tissue. Positive FC detected in HepG2 cells. Observed molecular weight by Western-blot: 23 kDa

## Preparation

This antibody was obtained by immunization of PRDX1 recombinant protein (Accession Number: NM\_002574). Purification method: Antigen affinity purified.

## Formulation

PBS with 0.02% sodium azide and 50% glycerol pH 7.3.

## Storage

Store at -20°C. DO NOT ALIQUOT

## Clonality

Polyclonal

## Ig Type

Rabbit IgG

## Applications

ELISA, WB, IF, IHC, IP, FC

## Dilutions

Recommended Dilution:

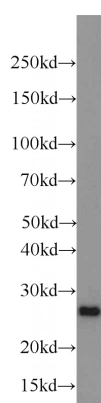
WB: 1:500-1:5000

IP: 1:500-1:5000

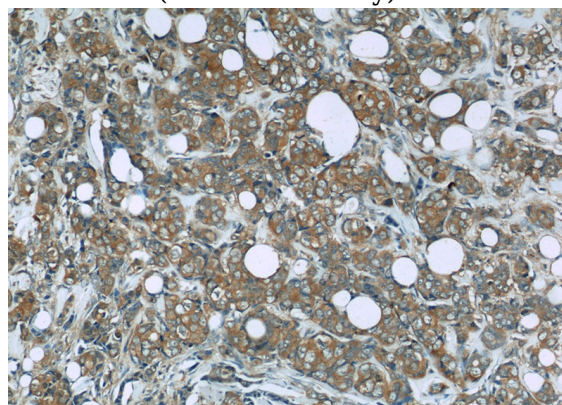
IHC: 1:20-1:200

IF: 1:10-1:100

## Validations



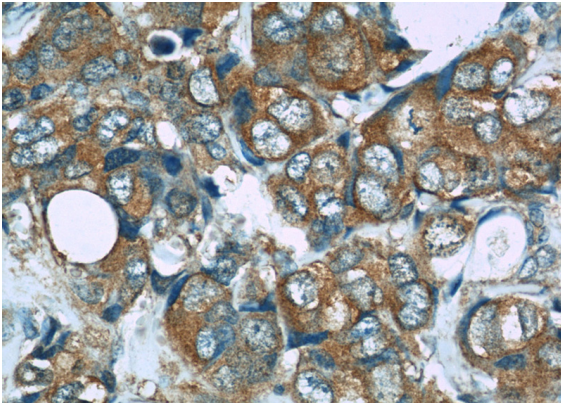
HEK-293 cells were subjected to SDS PAGE followed by western blot with Catalog No:114175(PRDX1 antibody) at dilution of 1:1000



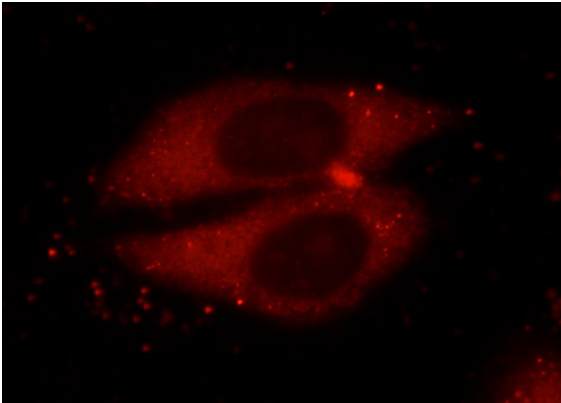
Immunohistochemistry of paraffin-embedded human breast cancer slide using Catalog No:114175(PRDX1 Antibody) at dilution of 1:50

# PRDX1 antibody

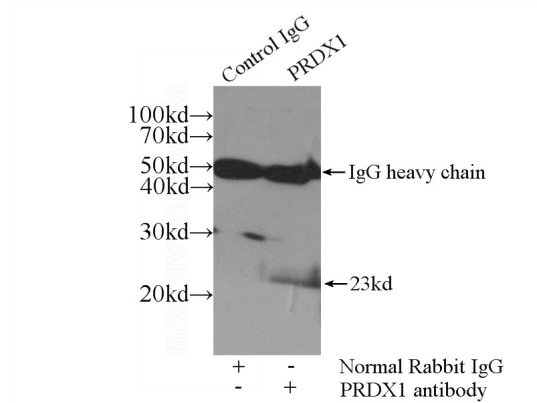
Catalog Number: 114175



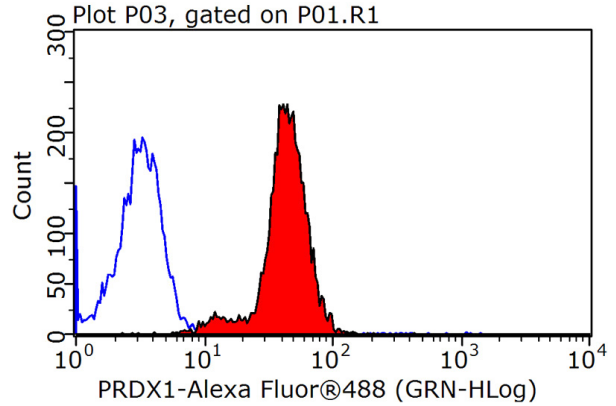
Immunohistochemistry of paraffin-embedded human breast cancer slide using Catalog No:114175(PRDX1 Antibody) at dilution of 1:50



Immunofluorescent analysis of HepG2 cells using Catalog No:114175(PRDX1 Antibody) at dilution of 1:25 and Rhodamine-Goat anti-Rabbit IgG



IP Result of anti-PRDX1 (IP:Catalog No:114175, 3ug; Detection:Catalog No:114175 1:1000) with HeLa cells lysate 2400ug.



$1 \times 10^6$  HepG2 cells were stained with 0.2ug PRDX1 antibody (Catalog No:114175, red) and control antibody (blue). Fixed with 90% MeOH blocked with 3% BSA (30 min). Alexa Fluor 488-conjugated AffiniPure Goat Anti-Rabbit IgG(H+L) with dilution 1:1500.