

General Information

Gene Name Synonym

Small-inducible cytokine A21

Protein Construction

A DNA sequence encoding the rhesus CCL21 (NP_001028027.1) (Met 1-Pro131) was expressed and purified.

Organism

Rhesus

Expression Host

Baculovirus-Insect Cells

QC Testing

Purity

> 94 % as determined by SDS-PAGE

Endotoxin

< 1.0 EU per μg of the protein as determined by the LAL method

Stability

Samples are stable for up to twelve months from date of receipt at -70°C

Predicted N terminal

Ser 24

Molecular Mass

The recombinant rhesus CCL21 consists of 108 amino acids and has a calculated molecular mass of 12 kDa.

Formulation

Lyophilized from sterile PBS

1. 5 % trehalose and mannitol are added as protectants before lyophilization.

2. Please contact us for any concerns or special requirements.

Usage Guide

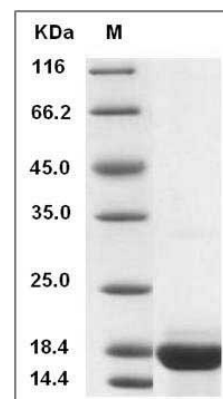
Storage

Store it under sterile conditions at -20°C to -80°C . It is recommended that the protein be aliquoted for optimal storage. Avoid repeated freeze-thaw cycles.

Reconstitution

Adding sterile water, prepare a stock solution of 0.25 mg/ml. Concentration is measured by UV-Vis.

SDS-PAGE



Cynomolgus CCL21 / 6Ckine Protein SDS-PAGE