

Anti-Cullin 4A/CUL-4A Rabbit antibody



Catalog Number: 167875

Product name

Anti-Cullin 4A/CUL-4A Rabbit antibody

Specificity

Human

Antibody description

Cullin 4A/CUL-4A Rabbit monoclonal antibody

Preparation

Antigen: A synthetic peptide of human Cullin 4A/CUL-4A

Formulation

50nM Tris-Glycine(pH 7.4), 0.15M NaCl, 40%Glycerol, 0.01% sodium azide and 0.05% BSA

Storage

Store at 4°C short term. Store at -20°C long term. Avoid freeze / thaw cycle.

Clonality

Monoclonal

Ig Type

Rabbit IgG

Applications

WB, IHC-P, IP

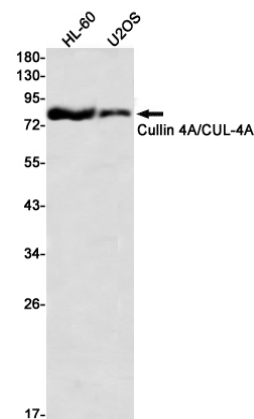
Dilutions

WB: 1/2000-1/10000

IHC: 1/50

IP: 1/20

Validations



Western blot detection of Cullin 4A/CUL-4A in HL-60,U2OS using Cullin 4A/CUL-4A Rabbit mAb(1:1000 diluted)