

Human LIF (His Tag) recombinant protein



Catalog Number: 503875

General Information

Gene Name Synonym

Differentiation-stimulating factor; Melanoma-derived LPL inhibitor

Protein Construction

A DNA sequence encoding the human LIF (P15018) (Met1-Phe202) with a C-terminal polyhistidine tag was expressed.

Organism

Human

Expression Host

Human Cells

QC Testing

Activity

Measured by its ability to inhibit the proliferation of M1 mouse myeloid leukemia cells. The ED₅₀ for this effect is typically 0.2-1 ng/ml.

Purity

> 95 % as determined by SDS-PAGE

Endotoxin

< 1.0 EU per µg of the protein as determined by the LAL method

Stability

Samples are stable for up to twelve months from date of receipt at -70°C

Predicted N terminal

Ser 23

Molecular Mass

The recombinant human LIF comprises 191 amino acids and has a predicted molecular mass of 21.2 kDa. The apparent molecular mass of the protein is approximately 35-42 kDa in SDS-PAGE under reducing conditions.

Formulation

Lyophilized from sterile PBS, pH 7.4.

1. 5 % trehalose and mannitol are added as protectants before lyophilization.

2. Please contact us for any concerns or special requirements.

Usage Guide

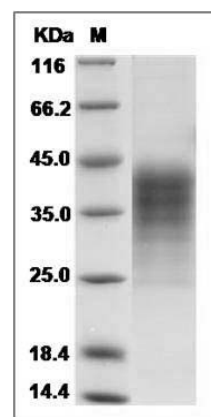
Storage

Store it under sterile conditions at -20°C to -80°C. It is recommended that the protein be aliquoted for optimal storage. Avoid repeated freeze-thaw cycles.

Reconstitution

Adding sterile water, prepare a stock solution of 0.25 mg/ml. Concentration is measured by UV-Vis.

SDS-PAGE



Human LIF Protein (His Tag) SDS-PAGE