

Anti-Pepsinogen C/PGC antibody



Catalog Number: 103875

Product name

Anti-Pepsinogen C/PGC antibody

Immunogen

[Human Pepsinogen C/PGC \(His Tag\) recombinant protein](#)

Specificity

Human Pepsinogen C / PGC
No cross-reactivity in WB and ELISA with Human cell lysate (293 cell line)

Antibody description

Mouse monoclonal to Pepsinogen C/PGC

Preparation

This antibody was produced from a hybridoma resulting from the fusion of a mouse myeloma with B cells obtained from a mouse immunized with purified, recombinant Human Pepsinogen C / PGC (rh Pepsinogen C / PGC; NP_002621.1; Met 1-Ala 388). The IgG fraction of the cell culture supernatant was purified by Protein A affinity chromatography.

Formulation

0.2 µm filtered solution in PBS with 5% trehalose

Storage

This antibody can be stored at 2°C-8°C for one month without detectable loss of activity. Antibody products are stable for twelve months from date of receipt when stored at -20°C to -80°C.

Preservative-Free.

Sodium azide is recommended to avoid contamination (final concentration 0.05%-0.1%). It is toxic to cells and should be disposed of

properly. Avoid repeated freeze-thaw cycles.

Clonality

Monoclonal

Ig Type

Mouse IgG1

Applications

ELISA, IHC-P

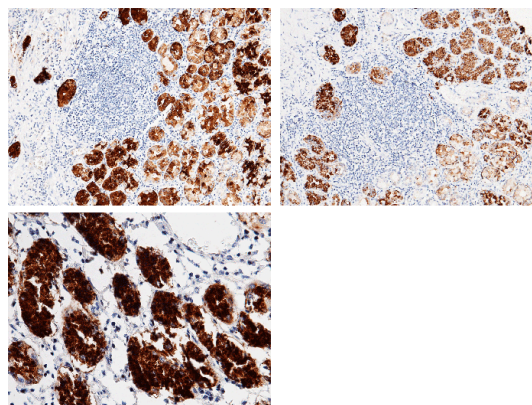
Dilutions

ELISA: 0.5-1 µg/mL

This antibody can be used at 0.5-1 µg/mL with the appropriate secondary reagents to detect Human PGC. The detection limit for Human PGC is approximately 0.31 ng/well.

IHC-P: 5-25 µg/mL

Validations



Pepsinogen C / PGC Antibody, Mouse MAb, Immunohistochemistry

Immunochemical staining of human PGC in human stomach (from 3 donors) with mouse monoclonal antibody (15 µg/mL, formalin-fixed paraffin embedded sections).