

Anti-PD1/PDCD1/CD279 antibody



Catalog Number: 101875

Product name

Polyclonal

Anti-PD1/PDCD1/CD279 antibody

Ig Type

Immunogen

Rabbit IgG

[Mouse PD1/PDCD1/CD279 \(His Tag\) recombinant protein](#)

Applications

ELISA, IHC-P

Specificity

Dilutions

Mouse PD1 / PDCD1 / CD279

ELISA: 0.5-1.0 µg/mL

Antibody description

This antibody can be used at 0.5-1.0 µg/mL with the appropriate secondary reagents to detect Mouse PDCD1. The detection limit for Mouse PDCD1 is 0.00245 ng/well.

Rabbit polyclonal to PD1/PDCD1/CD279

IHC-P: 0.1-2 µg/mL

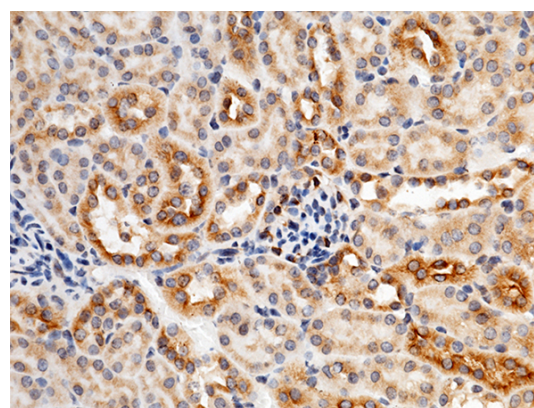
Preparation

Produced in rabbits immunized with purified, recombinant Mouse (rM PDCD1; Met 1-Gln 167; NP_032824.1). PDCD1 specific IgG was purified by mouse specific affinity chromatography.

Validations

Formulation

0.2 µm filtered solution in PBS with 5% trehalose



PD1 / PDCD1 / CD279 Antibody, Rabbit PAb, Antigen Affinity Purified, Immunohistochemistry

Storage

This antibody can be stored at 2°C-8°C for one month without detectable loss of activity. Antibody products are stable for twelve months from date of receipt when stored at -20°C to -80°C.

Preservative-Free.

Sodium azide is recommended to avoid contamination (final concentration 0.05%-0.1%). It is toxic to cells and should be disposed of properly. Avoid repeated freeze-thaw cycles.

Immunochemical staining of mouse PDCD1 in mouse kidney with rabbit polyclonal antibody (1 µg/mL, formalin-fixed paraffin embedded sections). Positive staining was localized to nephric tubule.

Clonality