

Anti-MLH1 (4C1) Mouse antibody



Catalog Number: 168475

Product name

Anti-MLH1 (4C1) Mouse antibody

Specificity

Human, Monkey

Antibody description

MLH1 (4C1) Mouse monoclonal antibody

Preparation

Antigen: Purified recombinant fragment of MLH1 (aa381-483) expressed in E. Coli.

Formulation

Ascitic fluid containing 0.03% sodium azide.

Storage

Store at 4°C short term. Store at -20°C long term. Avoid freeze / thaw cycle.

Clonality

Monoclonal

Ig Type

Mouse IgG1

Applications

WB, IHC-P, ICC/IF

Dilutions

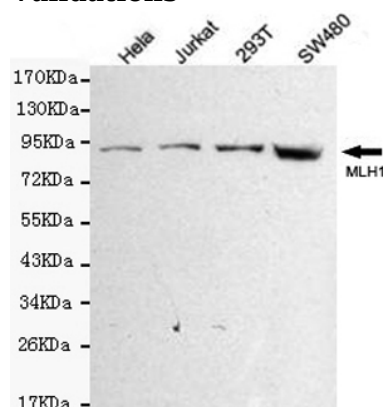
WB: 1/500 - 1/2000

IHC: 1/200 - 1/1000

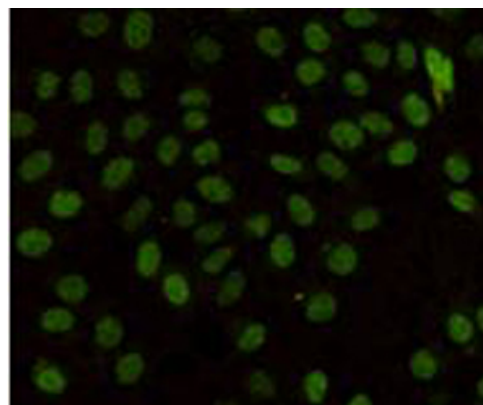
ICC: 1/200 - 1/1000

ELISA: 1/10000

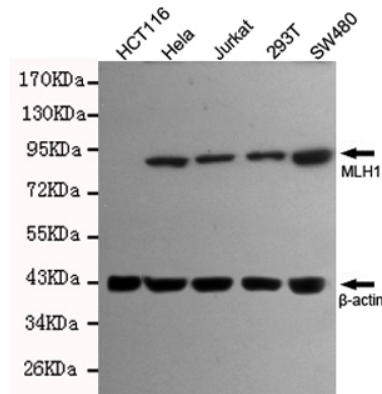
Validations



Western blot detection of MLH1 in HeLa, Jurkat, 293T and SW480 cell lysates using MLH1 mouse mAb (1:500 diluted). Predicted band size: 85KDa. Observed band size: 85KDa.



Immunocytochemistry staining of HeLa cells fixed in 1% Paraformaldehyde and using MLH1 mouse



mAb (dilution 1:100).

Western blot detection of MLH1 in SW480, 293T, Jurkat and HeLa cell lysates using MLH1 mouse mAb (1:500 diluted). Predicted band size: 85KDa. Observed band size: 85KDa.