

Anti-KMT2A antibody



Catalog Number: 176475

Product name

Anti-KMT2A antibody

Specificity

Human, Mouse, Rat

Antibody description

Rabbit polyclonal antibody to KMT2A

Preparation

This antigen of this antibody was synthetic peptide from human protein at aa range: 3850-3900

Formulation

Liquid, Liquid in PBS containing 50% glycerol, 0.5% BSA and 0.02% sodium azide.

Storage

Store at +4°C after thawing. Aliquot store at -20°C or -80°C. Avoid repeated freeze / thaw cycles.

Clonality

Polyclonal

Ig Type

Rabbit IgG

Applications

IHC-P

Dilutions

IHC-P: 1:50-200

Validations

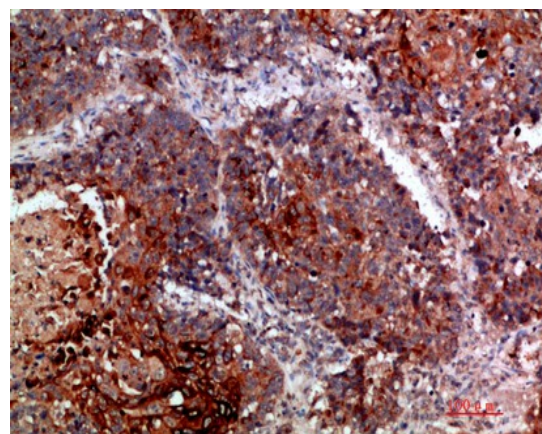


Fig1;; Immunohistochemical analysis of paraffin-embedded human-lung-cancer, antibody was diluted at 1:200