

# RASGEF1A antibody



Catalog Number: 114475

## Product name

RASGEF1A antibody

## Specificity

Human, Mouse, Rat; other species not tested.

## Antibody description

RASGEF1A Rabbit Polyclonal antibody. Positive IHC detected in human brain tissue. Positive WB detected in Transfected HEK-293 cells. Observed molecular weight by Western-blot: 55 kDa

## Preparation

This antibody was obtained by immunization of RASGEF1A recombinant protein (Accession Number: NM\_145313). Purification method: Antigen affinity purified.

## Formulation

PBS with 0.02% sodium azide and 50% glycerol pH 7.3.

## Storage

Store at -20°C. DO NOT ALIQUOT

## Clonality

Polyclonal

## Ig Type

Rabbit IgG

## Applications

ELISA, IHC, WB

## Dilutions

Recommended Dilution:

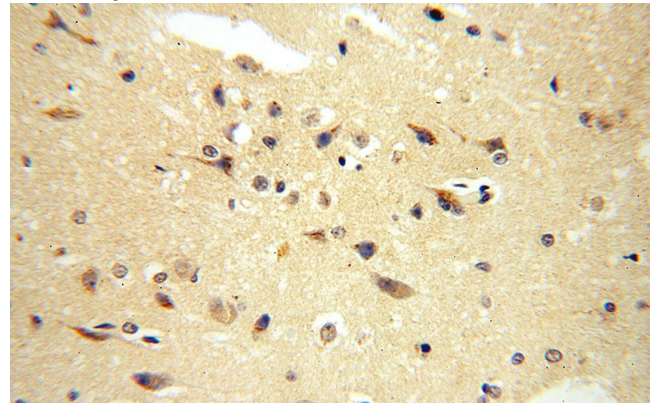
WB: 1:500-1:5000

IHC: 1:20-1:200

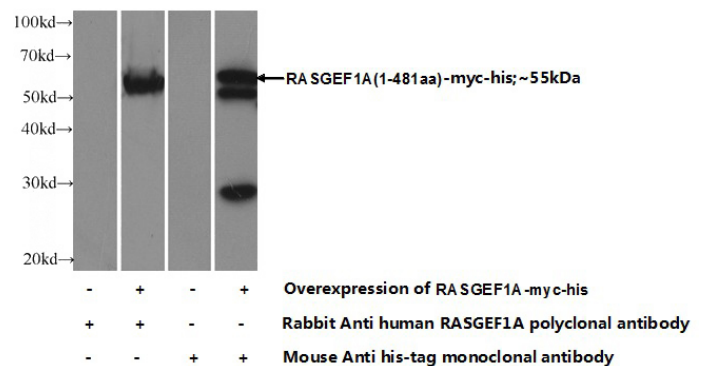
## Validations



Immunohistochemical of paraffin-embedded human brain using Catalog No:114475(RASGEF1A antibody) at dilution of 1:100 (under 10x lens)



Immunohistochemical of paraffin-embedded human brain using Catalog No:114475(RASGEF1A antibody) at dilution of 1:100 (under 40x lens)



Transfected HEK-293 cells were subjected to SDS PAGE followed by western blot with Catalog No:114475(RASGEF1A Antibody) at dilution of 1:1000