

HMG20A antibody



Catalog Number: 111475

Product name

HMG20A antibody

Recommended Dilution:

WB: 1:500-1:5000

Immunogen

IP: 1:200-1:2000

[Human HMG20A Recombinant protein \(His tag\)](#)

IHC: 1:20-1:200

Specificity

IF: 1:10-1:100

Human, Mouse, Rat; other species not tested.

Validations

Antibody description

HMG20A Rabbit Polyclonal antibody. Positive IP detected in Jurkat cells. Positive WB detected in Jurkat cells. Positive IF detected in HepG2 cells. Positive IHC detected in human pancreas cancer tissue. Observed molecular weight by Western-blot: 45-50 kDa

Preparation

This antibody was obtained by immunization of HMG20A recombinant protein (Accession Number: XM_047432108). Purification method: Antigen affinity purified.

Formulation

PBS with 0.1% sodium azide and 50% glycerol pH 7.3.

Storage

Store at -20°C. DO NOT ALIQUOT

Clonality

Polyclonal

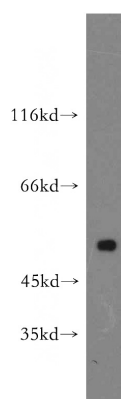
Ig Type

Rabbit IgG

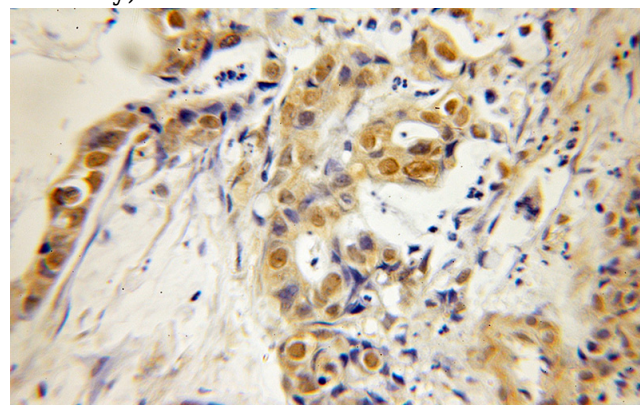
Applications

ELISA, WB, IHC, IF, IP

Dilutions



Jurkat cells were subjected to SDS PAGE followed by western blot with Catalog No:111475(HMG20A antibody) at dilution of 1:500

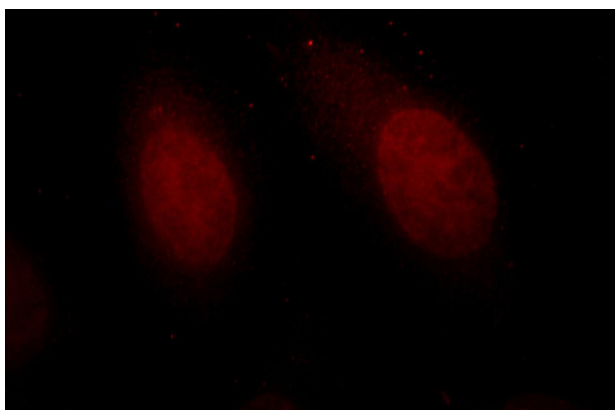


Immunohistochemical of paraffin-embedded human pancreas cancer using Catalog No:111475(HMG20A antibody) at dilution of 1:50 (under 10x lens)

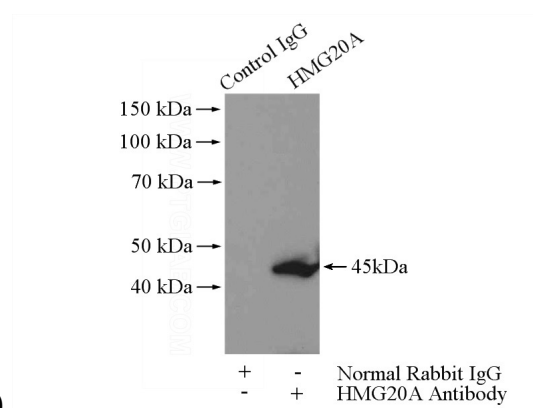
HMG20A antibody



Catalog Number: 111475



Immunofluorescent analysis of HepG2 cells, using HMG20A antibody Catalog No:111475 at 1:25 dilution and Rhodamine-labeled goat anti-rabbit



IgG (red).

IP Result of anti-HMG20A (IP:Catalog No:111475, 4ug; Detection:Catalog No:111475 1:500) with Jurkat cells lysate 3200ug.