

# ESR2 Beta-3 antibody

Catalog Number: 110475

---

## Product name

ESR2 Beta-3 antibody

## Specificity

Human; other species not tested.

## Antibody description

ESR2 Beta-3 Rabbit Polyclonal antibody. Positive IHC detected in human cervix tissue, human breast cancer tissue, human endometrial cancer tissue.

## Preparation

This antibody was obtained by immunization of Peptide (Accession Number: NM\_001437). Purification method: Antigen affinity purified.

## Formulation

PBS with 0.02% sodium azide and 50% glycerol pH 7.3.

## Storage

Store at -20°C. DO NOT ALIQUOT

## Clonality

Polyclonal

## Ig Type

Rabbit IgG

## Applications

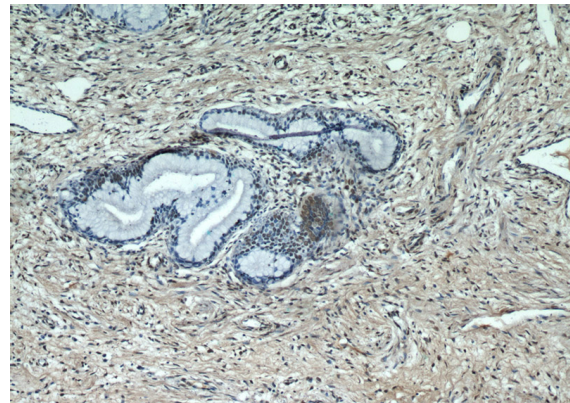
ELISA, IHC

## Dilutions

Recommended Dilution:

IHC: 1:20-1:200

## Validations



Immunohistochemical of paraffin-embedded human cervix using Catalog No:110475(ESR2 Beta-3 antibody) at dilution of 1:50 (under 10x lens)