

# GLUD2 antibody



Catalog Number: 111075

## Product name

GLUD2 antibody

Recommended Dilution:

WB: 1:500-1:5000

## Specificity

Human, Mouse, Rat; other species not tested.

IP: 1:500-1:5000

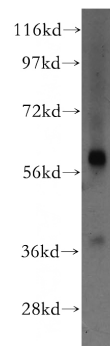
IHC: 1:20-1:200

## Antibody description

GLUD2 Rabbit Polyclonal antibody. Positive WB detected in mouse brain tissue, A431 cells, HepG2 cells, human testis tissue, mouse liver tissue, mouse testis tissue. Positive IP detected in mouse liver tissue. Positive IF detected in HepG2 cells. Positive IHC detected in human prostate cancer tissue. Observed molecular weight by Western-blot: 61-65 kDa

IF: 1:20-1:200

## Validations



## Preparation

This antibody was obtained by immunization of GLUD2 recombinant protein (Accession Number: NM\_012084). Purification method: Antigen affinity purified.

mouse brain tissue were subjected to SDS PAGE followed by western blot with Catalog No:111075(GLUD2 antibody) at dilution of 1:500

## Formulation

PBS with 0.02% sodium azide and 50% glycerol pH 7.3.

## Storage

Store at -20°C. DO NOT ALIQUOT

## Clonality

Polyclonal

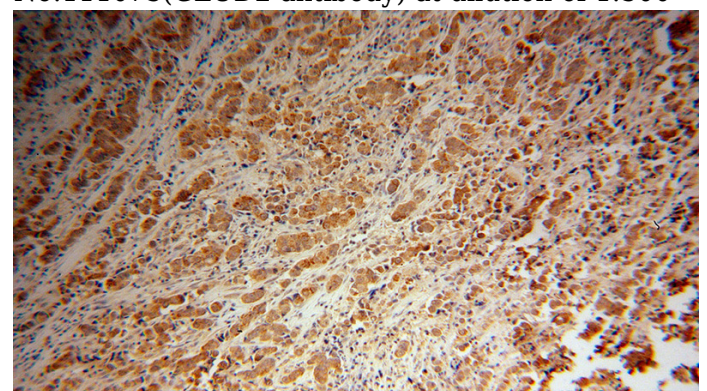
## Ig Type

Rabbit IgG

## Applications

ELISA, WB, IHC, IF, IP

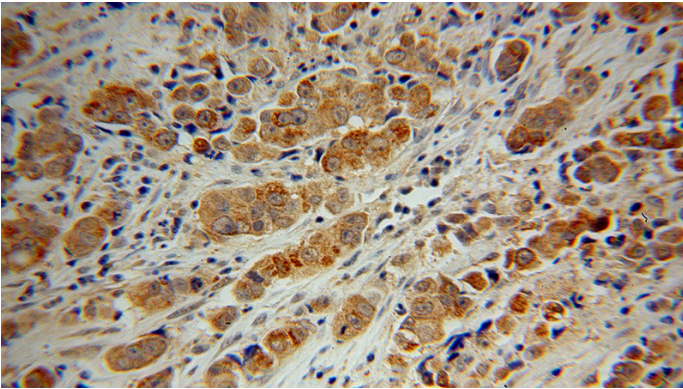
## Dilutions



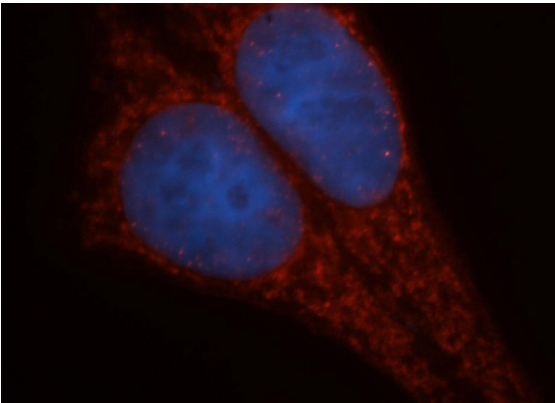
Immunohistochemical of paraffin-embedded human prostate cancer using Catalog No:111075(GLUD2 antibody) at dilution of 1:100 (under 10x lens)

# GLUD2 antibody

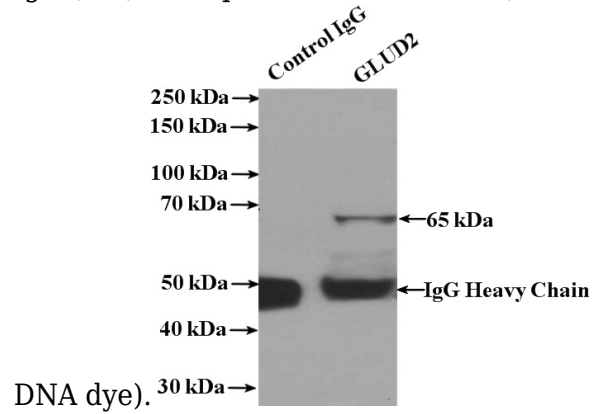
Catalog Number: 111075



Immunohistochemical of paraffin-embedded human prostate cancer using Catalog No:111075(GLUD2 antibody) at dilution of 1:100 (under 40x lens)



Immunofluorescent analysis of HepG2 cells, using GLUD2 antibody Catalog No:111075 at 1:50 dilution and Rhodamine-labeled goat anti-rabbit IgG (red). Blue pseudocolor = DAPI (fluorescent



IP Result of anti-GLUD2 (IP:Catalog No:111075, 4ug; Detection:Catalog No:111075 1:1000) with mouse liver tissue lysate 4000ug.