

Anti-ICAM3 Rabbit antibody



Catalog Number: 167765

Product name

Anti-ICAM3 Rabbit antibody

Specificity

Human

Antibody description

ICAM3 Rabbit monoclonal antibody

Preparation

Antigen: A synthetic peptide of human ICAM3

Formulation

50nM Tris-Glycine(pH 7.4), 0.15M NaCl,
40%Glycerol, 0.01% sodium azide and 0.05% BSA

Storage

Store at 4°C short term. Store at -20°C long term.
Avoid freeze / thaw cycle.

Clonality

Monoclonal

Ig Type

Rabbit IgG

Applications

WB, IHC-P, ICC/IF, FC, IP

Dilutions

WB: 1/1000

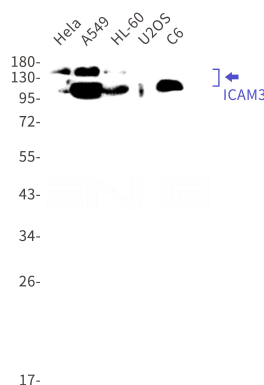
IHC: 1/100-1/500

ICC/IF: 1/50

FC: 1/20

IP: 1/20

Validations



Western blot detection of ICAM3 in HeLa, A549, HL-60, U2OS, C6 cell lysates using ICAM3 Rabbit mAb(1:1000 diluted). Predicted band size: 60kDa. Observed band size: 110-160kDa.