

Anti-IFNA1 antibody



Catalog Number: 141765

Product name

Anti-IFNA1 antibody

Specificity

Human IFN-alpha / IFNA1 / IFN

Antibody description

Rabbit Polyclonal to Human IFNA1

Preparation

Produced in rabbits immunized with a synthetic peptide corresponding to the N-terminus of the Human IFN-alpha / IFNA1 / IFN, and purified by antigen affinity chromatography.

Formulation

0.2 µm filtered solution in PBS

Storage

This antibody can be stored at 2°C-8°C for one month without detectable loss of activity. Antibody products are stable for twelve months from date of receipt when stored at -20°C to -80°C.

Preservative-Free.

Sodium azide is recommended to avoid contamination (final concentration 0.05%-0.1%). It is toxic to cells and should be disposed of

properly. Avoid repeated freeze-thaw cycles.

Clonality

Polyclonal

Ig Type

Rabbit IgG

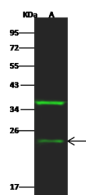
Applications

WB

Dilutions

WB: 5-20 µg/ml

Validations



Items	Lanes	A
Sample (whole cell lysate)		HL60
Sample Volume (µg/lane)		30
Gel		13% SDS-PAGE reducing gel
Recommended Concentration		5-20 µg/ml
Secondary Antibody		Dylight 800-labeled Antibody To Rabbit IgG (1:1), at 1:5000 dilution.
Developed using Odyssey imaging system.		
Explanation		Predicted band size : 22 kDa Observed band size : 22 kDa Additional bands at : 37 kDa (We are unsure as to the identity of these extra bands.)

Human IFN-alpha / IFNA1 / IFN Western blot (WB) 15408