

# Anti-Cathepsin D/CTSD antibody



Catalog Number: 102365

## Product name

Anti-Cathepsin D/CTSD antibody

## Immunogen

[Mouse Cathepsin D/CTSD \(His Tag\) recombinant protein](#)

## Specificity

Mouse Cathepsin-D / CTSD

## Antibody description

Rabbit polyclonal to Cathepsin D/CTSD

## Preparation

Produced in rabbits immunized with purified, recombinant Mouse CTSD (rM CTSD; NP\_034113.1; Met 1-Leu 410). CTSD specific IgG was purified by mouse CTSD affinity chromatography.

## Formulation

0.2 µm filtered solution in PBS with 5% trehalose

## Storage

This antibody can be stored at 2°C-8°C for one month without detectable loss of activity. Antibody products are stable for twelve months from date of receipt when stored at -20°C to -80°C.

Preservative-Free.

Sodium azide is recommended to avoid contamination (final concentration 0.05%-0.1%). It is toxic to cells and should be disposed of properly. Avoid repeated freeze-thaw cycles.

## Clonality

Polyclonal

## Ig Type

Rabbit IgG

## Applications

ELISA, WB, IP

## Dilutions

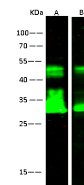
WB: 5-10 µg/mL

ELISA: 0.5-1 µg/mL

This antibody can be used at 0.5-1 µg/mL with the appropriate secondary reagents to detect Mouse CTSD. The detection limit for Mouse CTSD is 0.00245 ng/well.

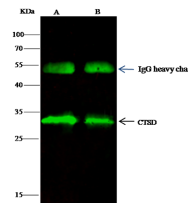
IP: 1-4 µg/mg of lysate

## Validations



Lanes	A	B
Items		
Sample (whole cell lysate)	HepG2	A431
Sample Volume (µg/lane)	30	30
Gel	13% SDS-PAGE reducing gel	
Recommended Concentration	5-10 µg/ml	
Secondary Antibody	Dylight 800-labeled Antibody to Rabbit IgG (H+L), at 1:5000 dilution.	
Developed using Odyssey imaging system		
Explanation	Predicted band size : 44 kDa Observed band size : 44 kDa Additional bands at : 35 kDa (We are unsure as to the identity of these extra bands. They are possible non-specific bindings).	

Cathepsin D / CTSD Antibody, Rabbit PAb, Antigen Affinity Purified, Western blot



Lanes	A	B
Items		
Sample (whole cell lysate)	MCF7	HepG2
Sample quantity	0.5 mg	
IP antibody quantity	2 µg	
Protein G agarose	1.5 µl of 50% Protein G Agarose	
Gel	13% SDS-PAGE reducing gel	
Primary antibody	mCTSD antibody at 5 µg/ml	
Secondary antibody	Dylight 800-labeled antibody to rabbit IgG (H+L), at 1:5000 dilution.	

Cathepsin D / CTSD Antibody, Rabbit PAb, Antigen Affinity Purified