

# Histone H1 antibody



Catalog Number: 111365

## Product name

Histone H1 antibody

## Specificity

Human, Mouse, Rat; other species not tested.

## Antibody description

Histone H1 Rabbit Polyclonal antibody. Positive IP detected in mouse kidney tissue. Positive WB detected in mouse thymus tissue, mouse kidney tissue, mouse lung tissue. Observed molecular weight by Western-blot: 28kd, 30kd

## Preparation

This antibody was obtained by immunization of Histone H1 recombinant protein (Accession Number: NM\_005325). Purification method: Antigen affinity purified.

## Formulation

PBS with 0.1% sodium azide and 50% glycerol pH 7.3.

## Storage

Store at -20°C. DO NOT ALIQUOT

## Clonality

Polyclonal

## Ig Type

Rabbit IgG

## Applications

ELISA, WB, IP

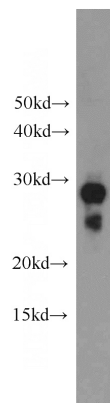
## Dilutions

Recommended Dilution:

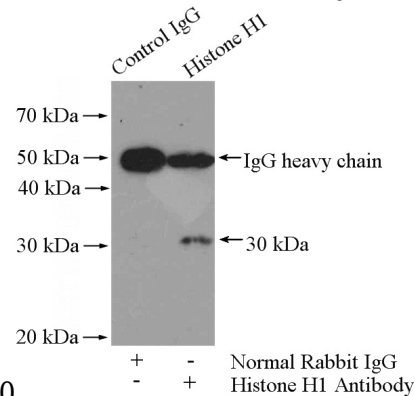
WB: 1:500-1:5000

IP: 1:200-1:2000

## Validations



mouse thymus tissue were subjected to SDS PAGE followed by western blot with Catalog No:111365(HIST1H1A antibody) at dilution of



1:1000

IP Result of anti-Histone H1 (IP:Catalog No:111365, 4ug; Detection:Catalog No:111365 1:500) with mouse kidney tissue lysate 4400ug.