

Cyclin E1 antibody



Catalog Number: 109665

Product name

Cyclin E1 antibody

Specificity

Human, Mouse, Rat; other species not tested.

Antibody description

Cyclin E1 Rabbit Polyclonal antibody. Positive FC detected in MCF-7 cells. Positive WB detected in K-562 cells, HeLa cells, human lung tissue, Jurkat cells, NIH/3T3 cells. Observed molecular weight by Western-blot: 53 kDa

Preparation

This antibody was obtained by immunization of Cyclin E1 recombinant protein (Accession Number: NM_001238). Purification method: Antigen affinity purified.

Formulation

PBS with 0.1% sodium azide and 50% glycerol pH 7.3.

Storage

Store at -20°C. DO NOT ALIQUOT

Clonality

Polyclonal

Ig Type

Rabbit IgG

Applications

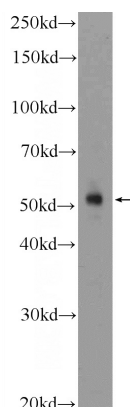
ELISA, WB, FC

Dilutions

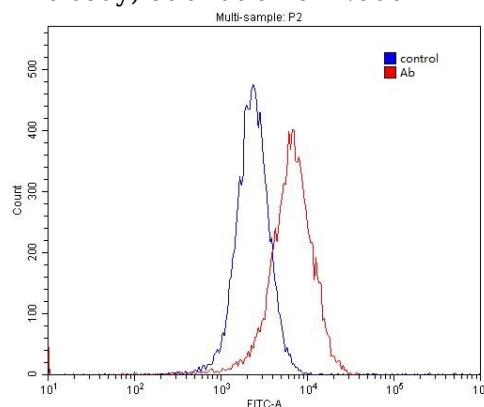
Recommended Dilution:

WB: 1:200-1:2000

Validations



K-562 cells were subjected to SDS PAGE followed by western blot with Catalog No:109665(Cyclin E Antibody) at dilution of 1:600



1X10⁶ MCF-7 cells were stained with 0.2ug Cyclin E antibody (Catalog No:109665, red) and control antibody (blue). Fixed with 4% PFA blocked with 3% BSA (30 min). Alexa Fluor 488-conjugated AffiniPure Goat Anti-Rabbit IgG(H+L) with dilution 1:1500.