

PDE6A antibody

Catalog Number: 113665

Product name

PDE6A antibody

IHC: 1:20-1:200

IF: N/A

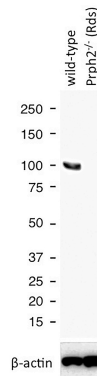
Specificity

Human, Mouse, Rat; other species not tested.

Validations

Antibody description

PDE6A Rabbit Polyclonal antibody. Positive WB detected in human brain tissue, HEK-293 cells, mouse eye tissue. Positive IHC detected in human ovary tumor tissue, human colon cancer tissue. Positive IF detected in retinal tissue. Observed molecular weight by Western-blot: 100-110 kDa



Preparation

This antibody was obtained by immunization of PDE6A recombinant protein (Accession Number: NM_000440). Purification method: Antigen affinity purified.

WB results of PDE6A antibody (Catalog No:113665) with WT mouse Eye and Prph2 (Rds) mutant mouse Eye (Negative control). Courtesy of Seongjin Seo, PhD, University of Iowa College of Medicine.

Formulation

PBS with 0.02% sodium azide and 50% glycerol pH 7.3.

Storage

Store at -20°C. DO NOT ALIQUOT

Clonality

Polyclonal

Ig Type

Rabbit IgG

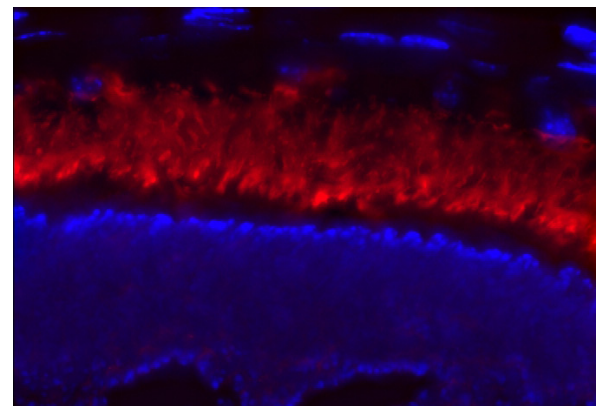
Applications

ELISA, WB, IF, IHC

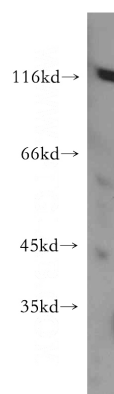
Dilutions

Recommended Dilution:

WB: 1:200-1:2000



IF stain of PDE6a antibody with retinal tissue by a customer. (PDE6a is in red and nuclei are blue).

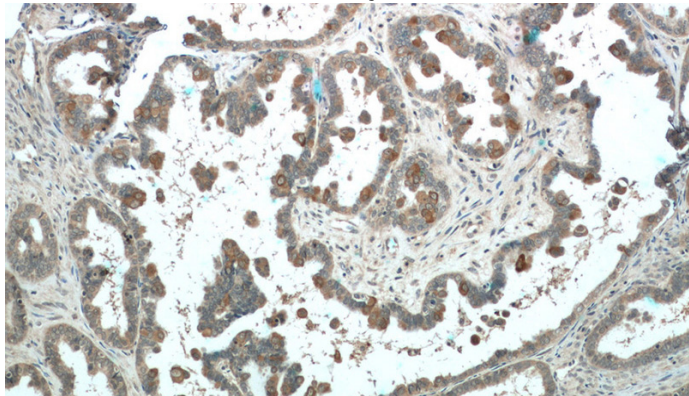


human brain tissue were subjected to SDS PAGE

PDE6A antibody

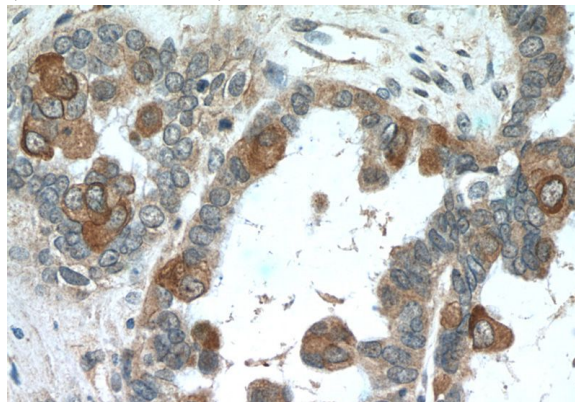
Catalog Number: 113665

followed by western blot with Catalog
No:113665(PDE6A antibody) at dilution of 1:500



Immunohistochemistry of paraffin-embedded
human ovary tumor tissue slide using Catalog
No:113665(PDE6A Antibody) at dilution of 1:50

(under 10x lens)



Immunohistochemistry of paraffin-embedded
human ovary tumor tissue slide using Catalog
No:113665(PDE6A Antibody) at dilution of 1:50
(under 40x lens)