

IFT20 antibody

Catalog Number: 111665

Product name

IFT20 antibody

Specificity

Human, Mouse; other species not tested.

Antibody description

IFT20 Rabbit Polyclonal antibody. Positive IHC detected in human endometrial cancer tissue. Positive IF detected in hTERT-RPE1 cells, MDCK cells. Positive IP detected in mouse testis tissue. Positive WB detected in mouse pancreas tissue, HEK-293 cells, mouse kidney tissue, mouse lung tissue. Observed molecular weight by Western-blot: 15-18 kDa

Preparation

This antibody was obtained by immunization of IFT20 recombinant protein (Accession Number: NM_001267775). Purification method: Antigen affinity purified.

Formulation

PBS with 0.02% sodium azide and 50% glycerol pH 7.3.

Storage

Store at -20°C. DO NOT ALIQUOT

Clonality

Polyclonal

Ig Type

Rabbit IgG

Applications

ELISA, IF, WB, IP, IHC

Dilutions

Recommended Dilution:

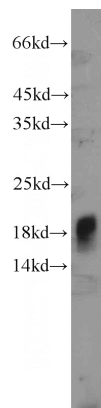
WB: 1:200-1:1000

IP: 1:200-1:2000

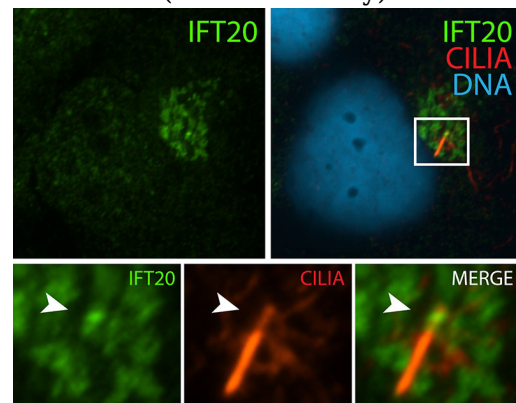
IHC: 1:20-1:200

IF: 1:20-1:200

Validations



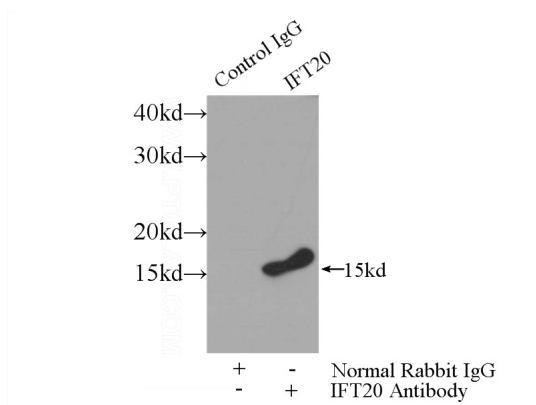
mouse pancreas tissue were subjected to SDS PAGE followed by western blot with Catalog No:111665(IFT20 antibody) at dilution of 1:400



IF result (localization to Golgi-like structures) of anti-IFT20 (Catalog No:111665, 1:50) with serum-starved hTERT-RPE1 (MoTH fixed) by Dr. Moshe

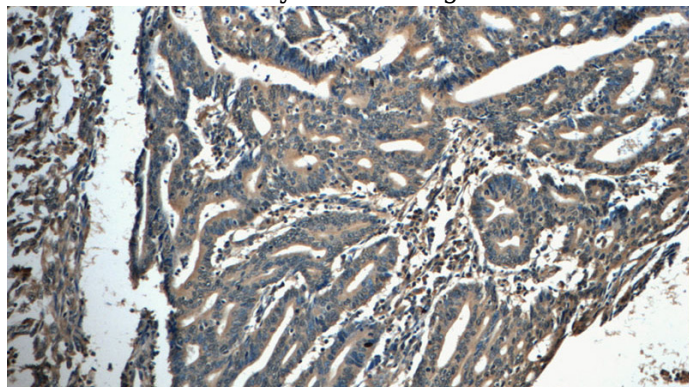
IFT20 antibody

Catalog Number: 111665

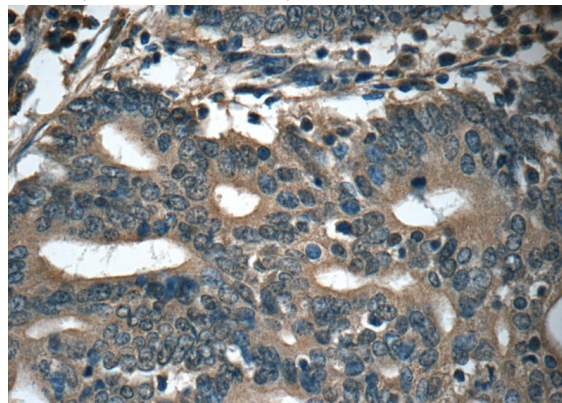


Kim.

IP Result of anti-IFT20 (IP:Catalog No:111665, 3ug; Detection:Catalog No:111665 1:700) with mouse testis tissue lysate 4000ug.



Immunohistochemistry of paraffin-embedded human endometrial cancer tissue slide using Catalog No:111665(IFT20 Antibody) at dilution of 1:50 (under 10x lens)



Immunohistochemistry of paraffin-embedded human endometrial cancer tissue slide using Catalog No:111665(IFT20 Antibody) at dilution of 1:50 (under 40x lens)