

IRGM Polyclonal Antibody



Catalog Number: 160665

Product name

IRGM Polyclonal Antibody

Specificity

Human, Mouse, Rat

Antibody description

Polyclonal antibody to IRGM

Preparation

Antigen: A synthetic peptide of human IRGM

Formulation

PBS with 0.02% sodium azide, pH7.3.

Storage

Store at 4°C. Avoid freeze / thaw cycles.

Clonality

Polyclonal

Ig Type

Rabbit IgG

Applications

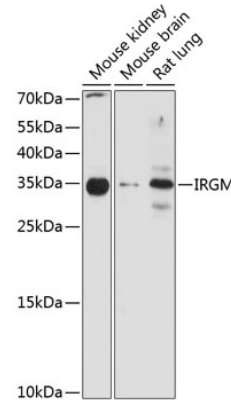
WB, IHC

Dilutions

WB 1:500 - 1:1000

IHC 1:20 - 1:50

Validations



Western blot - IRGM Polyclonal Antibody

Western blot analysis of extracts of various cell lines, using IRGM antibody at 1:1000 dilution. Secondary antibody: HRP Goat Anti-Rabbit IgG (H+L) at 1:10000 dilution. Lysates/proteins: 25ug per lane. Blocking buffer: 3% nonfat dry milk in TBST. Detection: ECL Enhanced Kit. Exposure time: 90s.