

# TPI1 antibody

Catalog Number: 116265

## Product name

TPI1 antibody

## Specificity

Human, Mouse, Rat; other species not tested.

## Antibody description

TPI1 Rabbit Polyclonal antibody. Positive WB detected in HepG2 cells, A431 cells, HEK-293 cells, rat kidney tissue, rat liver tissue. Positive IP detected in HEK-293 cells. Observed molecular weight by Western-blot: 27kd

## Preparation

This antibody was obtained by immunization of TPI1 recombinant protein (Accession Number: NM\_000365). Purification method: Antigen affinity purified.

## Formulation

PBS with 0.1% sodium azide and 50% glycerol pH 7.3.

## Storage

Store at -20°C. DO NOT ALIQUOT

## Clonality

Polyclonal

## Ig Type

Rabbit IgG

## Applications

ELISA, WB, IP

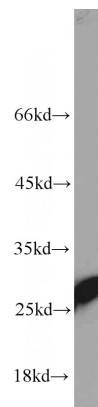
## Dilutions

Recommended Dilution:

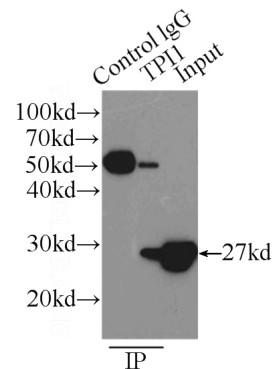
WB: 1:1000-1:10000

IP: 1:500-1:5000

## Validations



HepG2 cells were subjected to SDS PAGE followed by western blot with Catalog No:116265(TPI1 antibody) at dilution of 1:2000



IP Result of anti-TPI1 (IP:Catalog No:116265, 3ug; Detection:Catalog No:116265 1:1000) with HEK-293 cells lysate 2500ug.