

# LACTB2 antibody



Catalog Number: 112265

## Product name

LACTB2 antibody

WB: 1:500-1:5000

IP: 1:200-1:2000

## Specificity

Human, Mouse, Rat; other species not tested.

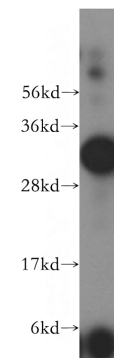
IHC: 1:20-1:200

IF: 1:10-1:100

## Antibody description

LACTB2 Rabbit Polyclonal antibody. Positive IF detected in HepG2 cells. Positive IHC detected in human cervix tissue. Positive IP detected in A549 cells. Positive WB detected in HeLa cells, MCF7 cells, mouse kidney tissue, mouse testis tissue, PC-3 cells, Y79 cells. Observed molecular weight by Western-blot: 33kd

## Validations



## Preparation

This antibody was obtained by immunization of LACTB2 recombinant protein (Accession Number: NM\_016027). Purification method: Antigen affinity purified.

HeLa cells were subjected to SDS PAGE followed by western blot with Catalog No:112265(LACTB2 antibody) at dilution of 1:500

## Formulation

PBS with 0.02% sodium azide and 50% glycerol pH 7.3.

## Storage

Store at -20°C. DO NOT ALIQUOT

## Clonality

Polyclonal

## Ig Type

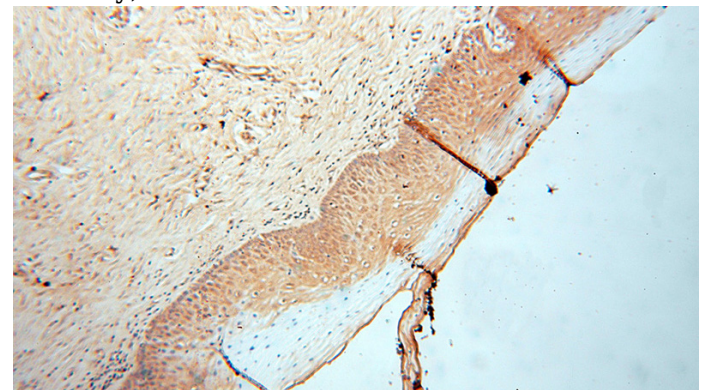
Rabbit IgG

## Applications

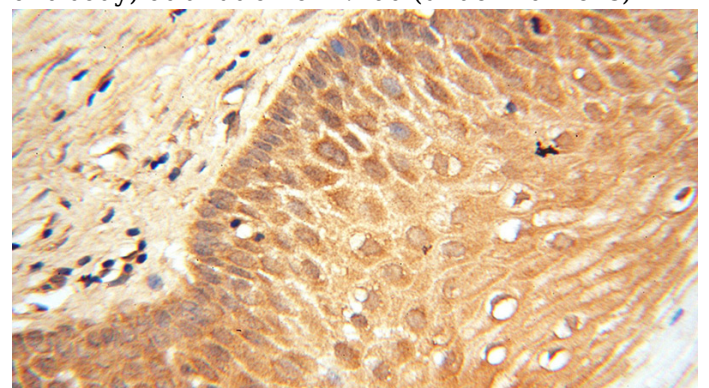
ELISA, WB, IHC, IF, IP

## Dilutions

Recommended Dilution:



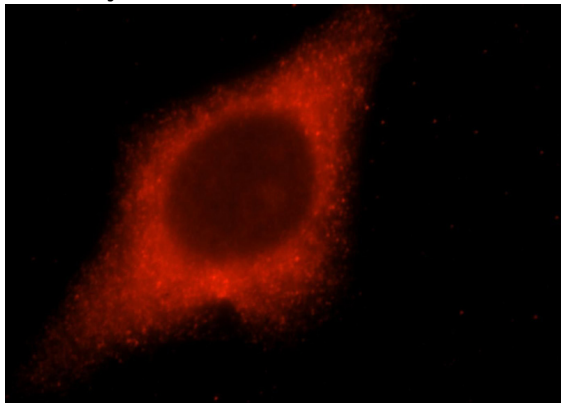
Immunohistochemical of paraffin-embedded human cervix using Catalog No:112265(LACTB2 antibody) at dilution of 1:100 (under 10x lens)



# LACTB2 antibody

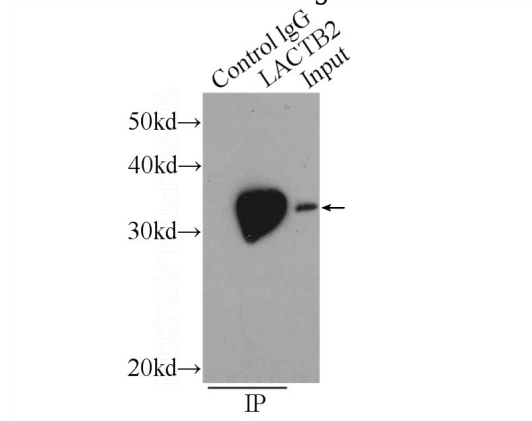
Catalog Number: 112265

Immunohistochemical of paraffin-embedded human cervix using Catalog No:112265(LACTB2 antibody) at dilution of 1:100 (under 40x lens)



Immunofluorescent analysis of HepG2 cells, using LACTB2 antibody Catalog No:112265 at 1:25

dilution and Rhodamine-labeled goat anti-rabbit



IgG (red).

IP Result of anti-LACTB2 (IP:Catalog No:112265, 3ug; Detection:Catalog No:112265 1:700) with A549 cells lysate 520ug.