

# Human CDC2 Kinase / CDK1 (GST Tag) recombinant protein



Catalog Number: 500265

## General Information

### Protein Construction

A DNA sequence encoding the human CDC2 isoform 1 (NP\_001777.1) (Met 1-Met 297) was fused with the GST tag at the N-terminus.

### Organism

Human

### Expression Host

Baculovirus-Insect Cells

## QC Testing

### Activity

No Kinase Activity

### Purity

> 92 % as determined by SDS-PAGE

### Endotoxin

< 1.0 EU per  $\mu\text{g}$  of the protein as determined by the LAL method

### Stability

Samples are stable for up to twelve months from date of receipt at  $-70^{\circ}\text{C}$

### Predicted N terminal

Met

### Molecular Mass

The recombinant human CDC2/GST chimera

consists of 522 amino acids and predicts a molecular mass of 60 kDa. It migrates as an approximately 53 kDa band in SDS-PAGE under reducing conditions.

### Formulation

Lyophilized from sterile 50mM Tris, 100mM NaCl, 0.5mM PMSF, 0.5mM EDTA, 0.5mM GSH, pH 8.0  
1. 5 % trehalose and mannitol are added as protectants before lyophilization.  
2. Please contact us for any concerns or special requirements.

## Usage Guide

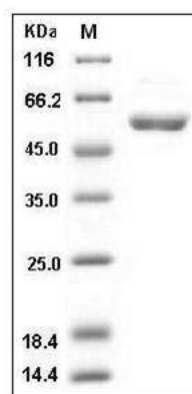
### Storage

Store it under sterile conditions at  $-20^{\circ}\text{C}$  to  $-80^{\circ}\text{C}$ . It is recommended that the protein be aliquoted for optimal storage. Avoid repeated freeze-thaw cycles.

### Reconstitution

Adding sterile water, prepare a stock solution of 0.25 mg/ml. Concentration is measured by UV-Vis.

### SDS-PAGE



Human CDC2 Kinase / CDK1 Protein (GST Tag)  
SDS-PAGE