

Anti-PAK2 Rabbit antibody



Catalog Number: 168965

Product name

Anti-PAK2 Rabbit antibody

Specificity

Human, Mouse, Rat

Antibody description

PAK2 Rabbit monoclonal antibody

Preparation

Antigen: A synthetic peptide of human PAK2

Formulation

Supplied in 50nM Tris-Glycine(pH 7.4), 0.15M NaCl, 40%Glycerol, 0.01% sodium azide and 0.05% BSA.

Storage

Store at 4°C short term. Aliquot and store at -20°C long term. Avoid freeze / thaw cycle.

Clonality

Monoclonal

Ig Type

Rabbit IgG

Applications

WB, IHC-P, ICC/IF, FC

Dilutions

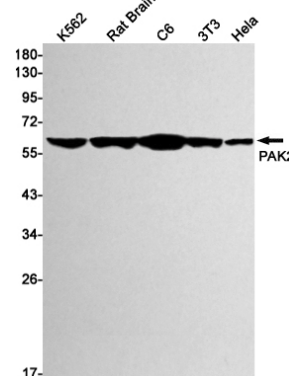
1:1000

1:20-1:100

1:20-1:50

1:20

Validations



Western blot detection of PAK2 in K562, Rat Brain, C6, 3T3, HeLa cell lysates using PAK2 Rabbit mAb(1:1000 diluted). Predicted band size: 58kDa. Observed band size: 58kDa.