

# Anti-phospho-PTP1B (Ser378) Rabbit antibody



Catalog Number: 167965

## Product name

Monoclonal

Anti-phospho-PTP1B (Ser378) Rabbit antibody

## Ig Type

Rabbit IgG

## Specificity

Human

## Applications

WB, IHC-P, ICC/IF

## Antibody description

phospho-PTP1B (Ser378) Rabbit monoclonal antibody

## Dilutions

WB: 1/2000-1/10000

## Preparation

IHC: 1/501/50

Antigen: A synthetic phosphopeptide corresponding to residues surrounding Ser378 of human PTP1B

## Validations

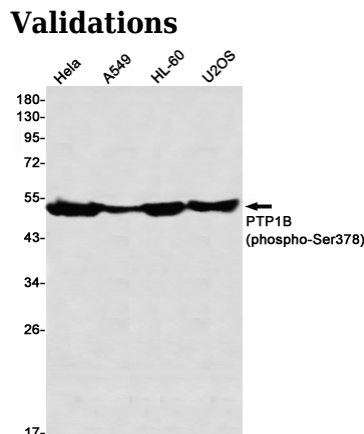
## Formulation

50nM Tris-Glycine(pH 7.4), 0.15M NaCl, 40%Glycerol, 0.01% sodium azide and 0.05% BSA

## Storage

Store at 4°C short term. Store at -20°C long term. Avoid freeze / thaw cycle.

## Clonality



Western blot detection of PTP1B (phospho-Ser378) in HeLa,A549,HL-60,U2OS using PTP1B (phospho-Ser378) Rabbit mAb(1:1000 diluted)