

RAB27A-specific antibody

Catalog Number: 106965

Product name

RAB27A-specific antibody

Specificity

human, rat; other species not tested.

Antibody description

RAB27A-specific Rabbit Polyclonal antibody.
Positive WB detected in K-562 cells, HL-60 cells.
Positive IHC detected in human liver cancer.
Observed molecular weight by Western-blot: 25kd

Preparation

This antibody was obtained by immunization of Peptide (Accession Number: NM_004580).
Purification method: Antigen affinity purified.

Formulation

PBS with 0.02% sodium azide and 50% glycerol
pH 7.3.

Storage

Store at -20°C. DO NOT ALIQUOT

Clonality

Polyclonal

Ig Type

Rabbit IgG

Applications

ELISA, WB, IHC

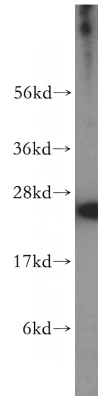
Dilutions

Recommended Dilution:

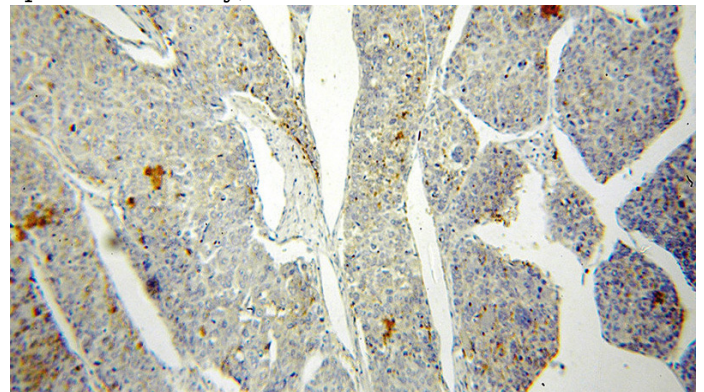
WB: 1:200-1:2000

IHC: 1:20-1:200

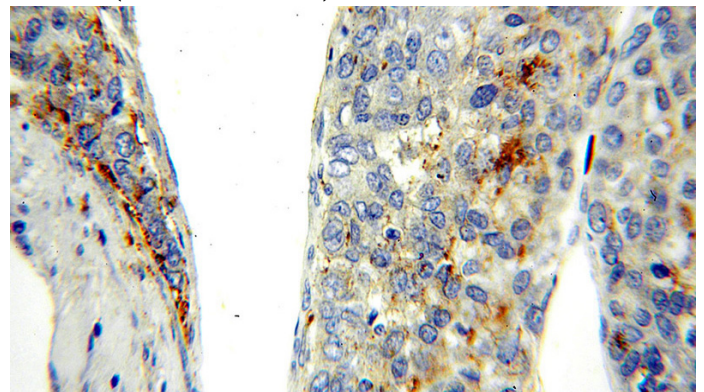
Validations



K-562 cells were subjected to SDS PAGE followed by western blot with Catalog No:114426(RAB27A-specific antibody) at dilution of 1:300



Immunohistochemical of paraffin-embedded human liver cancer using Catalog No:114426(RAB27A-specific antibody) at dilution of 1:50 (under 10x lens)



Immunohistochemical of paraffin-embedded human liver cancer using Catalog No:114426(RAB27A-specific antibody) at dilution of 1:50 (under 40x lens)