

Anti-Caspase-9 Rabbit antibody



Catalog Number: 166965

Product name

Anti-Caspase-9 Rabbit antibody

ICC/IF: 1/50-1/200

Specificity

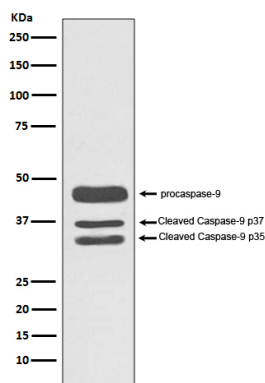
Human, Mouse

IP: 1/50

Validations

Antibody description

Caspase-9 Rabbit polyclonal antibody



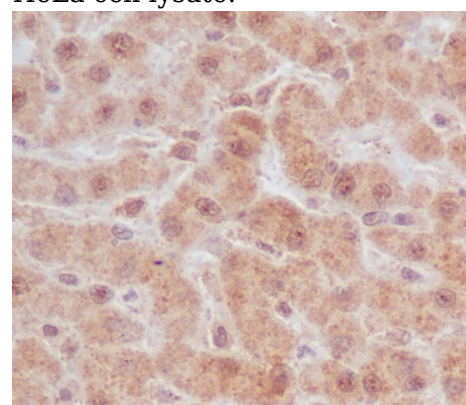
Preparation

Antigen: A synthesized peptide derived from human Caspase-9

Western blot analysis of Caspase-9 expression in HeLa cell lysate.

Formulation

Rabbit IgG in phosphate buffered saline , pH 7.4, 150mM NaCl, 0.02% sodium azide and 50% glycerol.



Storage

Store at 4°C short term. Store at -20°C long term. Avoid freeze / thaw cycle.

Clonality

Polyclonal

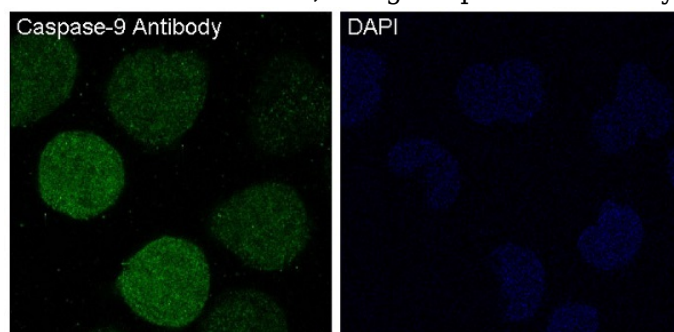
Immunohistochemical analysis of paraffin-embedded human liver, using Caspase-9 Antibody.

Ig Type

Rabbit IgG

Applications

WB, IHC-P, ICC/IF, IP



Dilutions

WB: 1/500-1/2000

IHC: 1/50-1/200

Immunofluorescent analysis of HeLa cells treated with staurosporine, using Caspase-9 Antibody.