

S100A8 antibody



Catalog Number: 114965

Product name

S100A8 antibody

IHC: 1:20-1:200

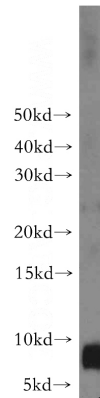
Specificity

Human, Mouse; other species not tested.

Antibody description

S100A8 Rabbit Polyclonal antibody. Positive WB detected in K-562 cells, A375 cells, A431 cells, A549 cells, COLO 320 cells, human serum tissue. Positive IHC detected in human stomach cancer tissue, human oesophagus tissue. Observed molecular weight by Western-blot: 9 kDa

Validations



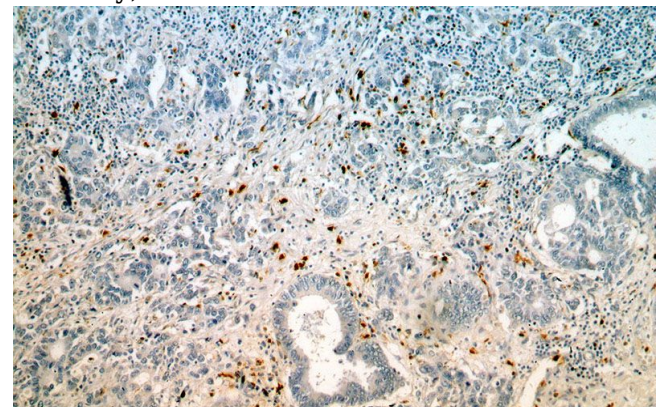
Preparation

This antibody was obtained by immunization of S100A8 recombinant protein (Accession Number: NM_002964). Purification method: Antigen affinity purified.

K-562 cells were subjected to SDS PAGE followed by western blot with Catalog No:114965(S100A8 antibody) at dilution of 1:1000

Formulation

PBS with 0.02% sodium azide and 50% glycerol pH 7.3.



Storage

Store at -20°C. DO NOT ALIQUOT

Immunohistochemical of paraffin-embedded human stomach cancer using Catalog No:114965(S100A8 antibody) at dilution of 1:100 (under 10x lens)

Clonality

Polyclonal

Ig Type

Rabbit IgG

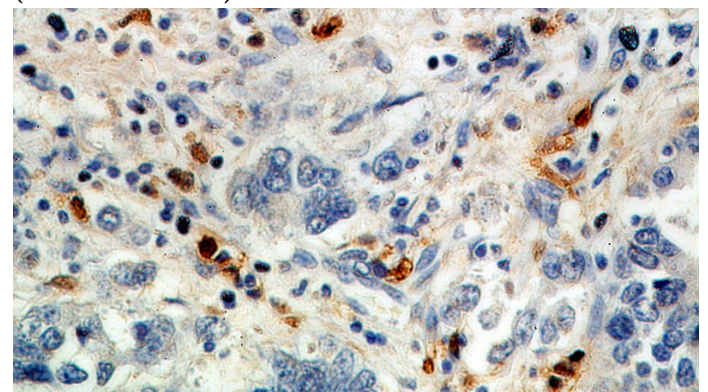
Applications

ELISA, WB, IHC

Dilutions

Recommended Dilution:

WB: 1:500-1:5000



Immunohistochemical of paraffin-embedded human stomach cancer using Catalog No:114965(S100A8 antibody) at dilution of 1:100

S100A8 antibody



Catalog Number: 114965

(under 40x lens)