

PLEKHO2 antibody



Catalog Number: 113965

Product name

PLEKHO2 antibody

IHC: 1:20-1:200

IF: 1:20-1:200

Specificity

Human, Mouse; other species not tested.

Antibody description

PLEKHO2 Rabbit Polyclonal antibody. Positive IF detected in A431 cells. Positive IHC detected in human lung tissue, human cervical cancer tissue, human spleen tissue. Positive WB detected in HeLa cells, mouse thymus tissue. Observed molecular weight by Western-blot: 53 kDa

Preparation

This antibody was obtained by immunization of PLEKHO2 recombinant protein (Accession Number: NM_001195059). Purification method: Antigen affinity purified.

Formulation

PBS with 0.1% sodium azide and 50% glycerol pH 7.3.

Storage

Store at -20°C. DO NOT ALIQUOT

Clonality

Polyclonal

Ig Type

Rabbit IgG

Applications

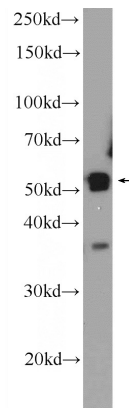
ELISA, WB, IHC, IF

Dilutions

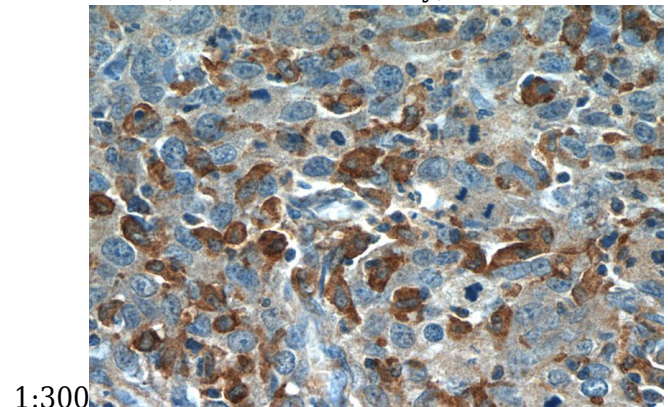
Recommended Dilution:

WB: 1:200-1:1000

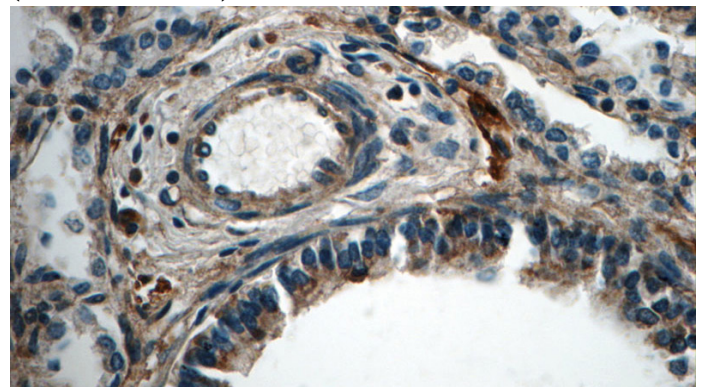
Validations



HeLa cells were subjected to SDS PAGE followed by western blot with Catalog No:113965(PLEKHO2 Antibody) at dilution of



Immunohistochemistry of paraffin-embedded human cervical cancer tissue slide using Catalog No:113965(PLEKHO2 Antibody) at dilution of 1:50 (under 40x lens)



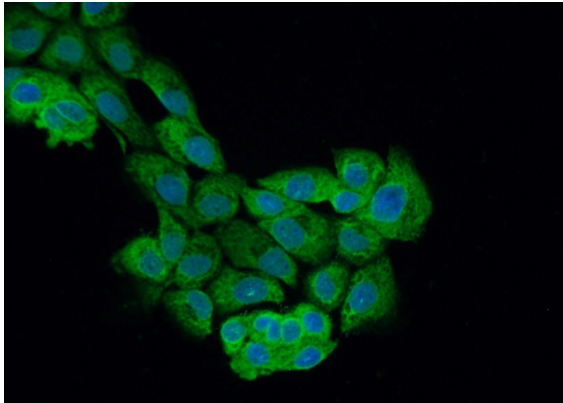
Immunohistochemistry of paraffin-embedded

PLEKHO2 antibody



Catalog Number: 113965

human lung tissue slide using Catalog No:113965(PLEKHO2 Antibody) at dilution of 1:50 (under 40x lens)



Immunofluorescent analysis of A431 cells using Catalog No:113965(PLEKHO2 Antibody) at dilution of 1:50 and Alexa Fluor 488-conjugated AffiniPure Goat Anti-Rabbit IgG(H+L)