

# Anti-PTF1A antibody

Catalog Number: 142965

## Product name

Anti-PTF1A antibody

## Specificity

Human PTF1A

## Antibody description

Rabbit Polyclonal to Human PTF1A

## Preparation

Produced in rabbits immunized with a synthetic peptide corresponding to the C-terminus of the Human PTF1A, and purified by antigen affinity chromatography.

## Formulation

0.2  $\mu$ m filtered solution in PBS

## Storage

This antibody can be stored at 2°C-8°C for one month without detectable loss of activity. Antibody products are stable for twelve months from date of receipt when stored at -20°C to -80°C.

Preservative-Free.

Sodium azide is recommended to avoid contamination (final concentration 0.05%-0.1%). It is toxic to cells and should be disposed of properly. Avoid repeated freeze-thaw cycles.

## Clonality

Polyclonal

## Ig Type

Rabbit IgG

## Applications

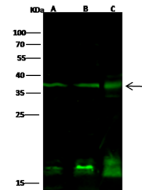
WB, ICC/IF, IF

## Dilutions

WB: 5-20  $\mu$ g/ml

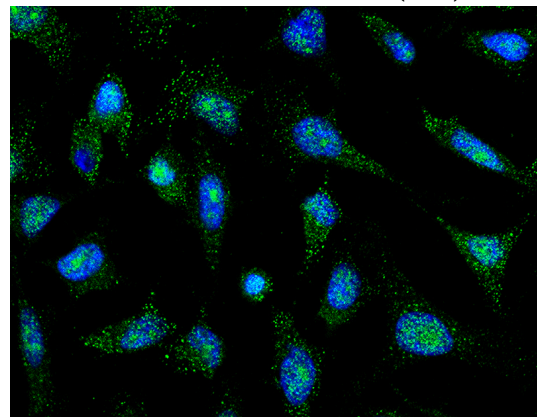
ICC/IF: 0.5-3 $\mu$ g/mL

## Validations



Lanes	A	B	C
Items			
Sample (whole cell lysate)	Jurkat	K562	MCF7
Sample Volume ( $\mu$ g/lane)	30	30	30
Gel	13% SDS-PAGE reducing gel		
Recommended Concentration	5-20 $\mu$ g/ml		
Secondary Antibody	Dylight 800 labeled Antibody to Rabbit IgG (H+L), at 1:5000 dilution.		
Developed using Odyssey imaging system.			
Explanation	Predicted band size : 35 kDa Observed band size : 38 kDa Additional bands at : 17 kDa (We are unsure as to the identity of these extra bands.)		

## Human PTF1A Western blot (WB) 15680



## Human PTF1A Immunofluorescence(IF) 15681