

Canine c-Met/HGFR (His Tag) recombinant protein



Catalog Number: 500965

General Information

Gene Name Synonym

HGF/SF receptor; Proto-oncogene c-Met; Scatter factor receptor; Tyrosine-protein kinase Met

Protein Construction

A DNA sequence encoding the extracellular domain of canine MET (NP_001002963.1) (Met 1-Leu 935) was expressed, with a polyhistidine tag at the N-terminus.

Organism

Canine

Expression Host

Human Cells

QC Testing

Activity

1. Measured by its binding ability in a functional ELISA.
2. Immobilized human HGF (Cat:502454) at 10 µg/mL (100 µl/well) can bind canine c-MET (Cat:500965), The EC_{50} of canine c-MET (Cat:500965) is 7 ng/mL.
3. Immobilized canine MET-His at 10 µg/mL (100 µl/well) can bind biotinylated human HGF-His (Cat:10463-H08H), The EC_{50} of biotinylated human HGF-His (Cat:10463-H08H) is 0.11-0.25 µg/mL.

Purity

> 95 % as determined by SDS-PAGE

Endotoxin

< 1.0 EU per µg of the protein as determined by the LAL method

Stability

Samples are stable for up to twelve months from

date of receipt at -70°C

Predicted N terminal

Glu 25

Molecular Mass

The recombinant canine c-Met is a disulfide-linked heterodimer composed of proteolytically cleaved ? and ? subunits. Each ? and ? subunit together consists of 922 amino acids and has a predicted molecular mass of 103 (? = 33 + ? = 70) kDa. As a result of glycosylation, the apparent molecular mass of the canine c-Met is approximately 42-47 kDa and 85-95 kDa respectively in SDS-PAGE under reducing conditions.

Formulation

- Lyophilized from sterile PBS, pH 7.4
1. 5 % trehalose and mannitol are added as protectants before lyophilization.
 2. Please contact us for any concerns or special requirements.

Usage Guide

Storage

Store it under sterile conditions at -20°C to -80°C. It is recommended that the protein be aliquoted for optimal storage. Avoid repeated freeze-thaw cycles.

Reconstitution

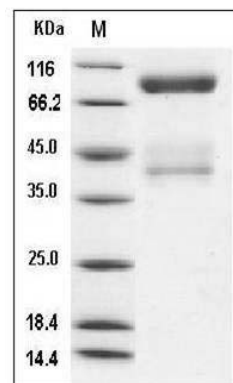
Adding sterile water, prepare a stock solution of 0.25 mg/mL. Concentration is measured by UV-Vis.

SDS-PAGE

Canine c-Met/HGFR (His Tag) recombinant protein



Catalog Number: 500965



Canine c-MET / HGFR Protein (His Tag) SDS-PAGE