

# Human $\alpha$ -Synuclein Recombinant protein (GST tag)



Catalog Number: 505565

## General Information

### Gene Name Synonym

Non-A beta component of AD amyloid; Non-A4 component of amyloid precursor

### Protein Construction

1-140 aa encoded by NM\_001375288 was inserted into PKG vector

### Organism

Human

### Expression Host

E. coli

## QC Testing

### Activity

Not tested.

### Endotoxin

Please contact the lab for more information.

### Stability

Store for up to 12 months at  $-20^{\circ}\text{C}$  to  $-80^{\circ}\text{C}$  as lyophilized powder.

### Formulation

Protein lyophilized in sterile PBS (58 mM  $\text{Na}_2\text{HPO}_4$ , 17 mM  $\text{NaH}_2\text{PO}_4$ , 68 mM  $\text{NaCl}$ , 100 mM  $\text{GSH}$ , pH 8.0). Trehalose (5-8%) and mannitol (5-8%) protectants were added before

lyophilization.

## Usage Guide

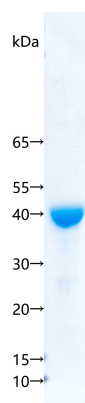
### Storage

Store it under sterile conditions at  $-20^{\circ}\text{C}$  to  $-80^{\circ}\text{C}$ . It is recommended that the protein be aliquoted for optimal storage. Avoid repeated freeze-thaw cycles.

### Reconstitution

Reconstitute at  $0.25\ \mu\text{g}/\mu\text{l}$  in sterile water for short-term storage. Reconstitution with 50% glycerol solution is recommended for longer term storage (see Stability and Storage for more details). If a different concentration is needed for your purposes please adjust the reconstitution volume as required (please note: the ion concentration of the final solution will vary according to the volume used). Note: Centrifuge vial before opening. When reconstituting, gently pipet and wash down the sides of the vial to ensure full recovery of the protein into solution.

### SDS-PAGE



Recombinant human  $\alpha$ -Synuclein SDS-PAGE