

Clusterin antibody



Catalog Number: 107165

Product name

Clusterin antibody

WB: 1:500-1:5000

IHC: 1:20-1:200

Specificity

Human; other species not tested.

Antibody description

Clusterin Mouse Monoclonal antibody. Positive WB detected in Human Blood. Positive IHC detected in human liver tissue, human breast cancer tissue, human prostate cancer tissue. Observed molecular weight by Western-blot: 36kDa

Preparation

This antibody was obtained by immunization of Clusterin recombinant protein (Accession Number: NM_001831). Purification method: Protein G purified.

Formulation

PBS with 0.02% sodium azide and 50% glycerol pH 7.3.

Storage

Store at -20°C. DO NOT ALIQUOT

Clonality

Monoclonal

Ig Type

Mouse IgG1

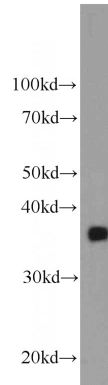
Applications

ELISA, WB, IHC

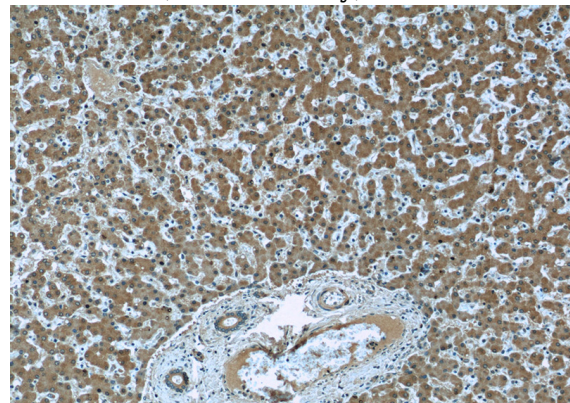
Dilutions

Recommended Dilution:

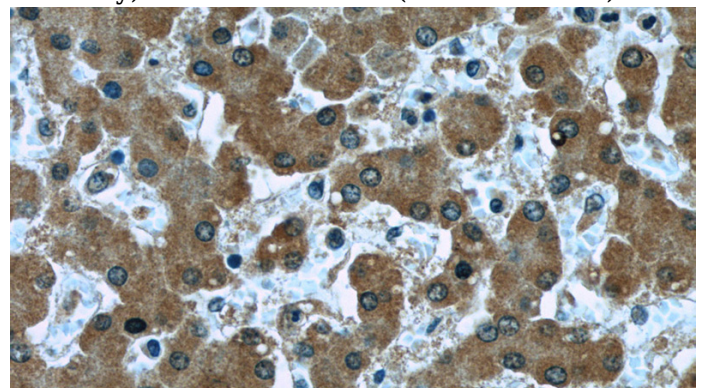
Validations



human blood tissue were subjected to SDS PAGE followed by western blot with Catalog No:107165(CLU antibody) at dilution of 1:1000



Immunohistochemistry of paraffin-embedded human liver slide using Catalog No:107165(CLU Antibody) at dilution of 1:50 (under 10x lens)



Immunohistochemistry of paraffin-embedded human liver slide using Catalog No:107165(CLU Antibody) at dilution of 1:50 (under 40x lens)