

# SGF29 antibody

Catalog Number: 115165

## Product name

SGF29 antibody

## Specificity

Human; other species not tested.

## Antibody description

SGF29 Rabbit Polyclonal antibody. Positive IHC detected in human liver cancer tissue, human cervical cancer tissue. Positive WB detected in HeLa cells, MDA-MB-453s cells. Observed molecular weight by Western-blot: 33 kDa

## Preparation

This antibody was obtained by immunization of SGF29 recombinant protein (Accession Number: NM\_138414). Purification method: Antigen Affinity purified.

## Formulation

PBS with 0.02% sodium azide and 50% glycerol pH 7.3.

## Storage

Store at -20°C. DO NOT ALIQUOT

## Clonality

Polyclonal

## Ig Type

Rabbit IgG

## Applications

ELISA, WB, IHC

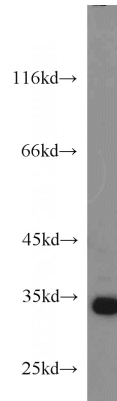
## Dilutions

Recommended Dilution:

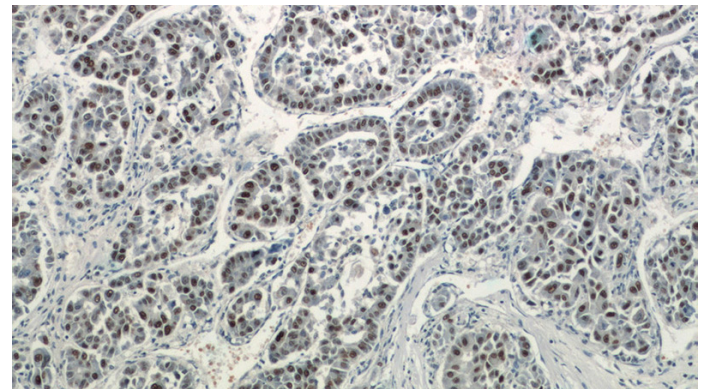
WB: 1:500-1:5000

IHC: 1:20-1:200

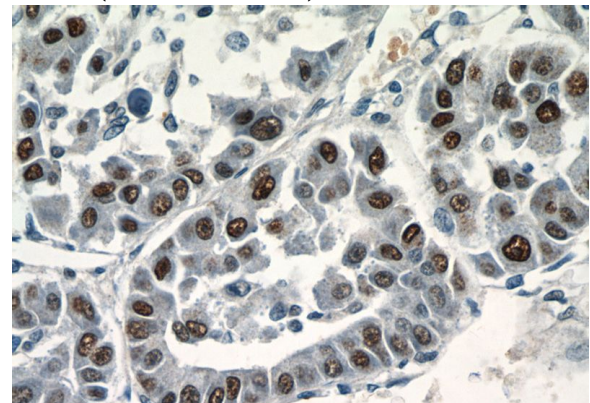
## Validations



HeLa cells were subjected to SDS PAGE followed by western blot with Catalog No:115165(CCDC101 antibody) at dilution of 1:1000



Immunohistochemistry of paraffin-embedded human liver cancer tissue slide using Catalog No:115165(CCDC101 Antibody) at dilution of 1:400 (under 10x lens)



Immunohistochemistry of paraffin-embedded human liver cancer tissue slide using Catalog

# SGF29 antibody



Catalog Number: 115165

---

No:115165(CCDC101 Antibody) at dilution of 1:400 (under 40x lens)