

LC3A-Specific antibody

Catalog Number: 112165

Product name

LC3A-Specific antibody

Specificity

Human, Mouse, Rat; other species not tested.

Antibody description

LC3A-Specific Rabbit Polyclonal antibody. Positive IF detected in HepG2 cells. Positive FC detected in HeLa cells. Positive WB detected in mouse brain tissue, human brain tissue, mouse testis tissue. Observed molecular weight by Western-blot: 15-18kd

Preparation

This antibody was obtained by immunization of Peptide (Accession Number: NM_032514). Purification method: Antigen affinity purified.

Formulation

PBS with 0.02% sodium azide and 50% glycerol pH 7.3.

Storage

Store at -20°C. DO NOT ALIQUOT

Clonality

Polyclonal

Ig Type

Rabbit IgG

Applications

ELISA, WB, IF, FC

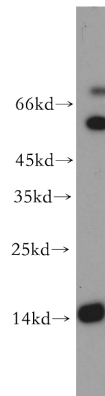
Dilutions

Recommended Dilution:

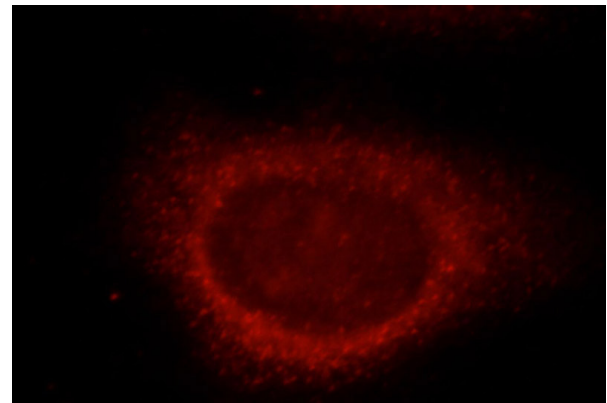
WB: 1:1000-1:10000

IF: 1:10-1:100

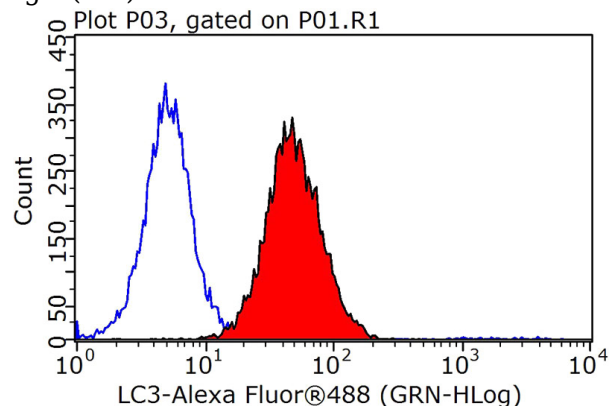
Validations



mouse brain tissue were subjected to SDS PAGE followed by western blot with Catalog No:112165(LC3-Specific antibody) at dilution of 1:1500



Immunofluorescent analysis of HepG2 cells, using MAP1LC3A antibody Catalog No:112165 at 1:25 dilution and Rhodamine-labeled goat anti-rabbit IgG (red).



1X10⁶ HeLa cells were stained with 0.2ug LC3-

LC3A-Specific antibody



Catalog Number: 112165

Specific antibody (Catalog No:112165, red) and control antibody (blue). Fixed with 90% MeOH blocked with 3% BSA (30 min). Alexa Fluor 488-

conjugated AffiniPure Goat Anti-Rabbit IgG(H+L) with dilution 1:1000.