

GSDMB antibody

Catalog Number: 111165

Product name

GSDMB antibody

Specificity

Human; other species not tested.

Antibody description

GSDMB Rabbit Polyclonal antibody. Positive IHC detected in human stomach cancer tissue. Positive WB detected in Transfected HEK-293 cells, COLO 320 cells, PC-3 cells. Observed molecular weight by Western-blot: 47 kDa

Preparation

This antibody was obtained by immunization of GSDMB recombinant protein (Accession Number: XM_017024851). Purification method: Antigen affinity purified.

Formulation

PBS with 0.02% sodium azide and 50% glycerol pH 7.3.

Storage

Store at -20°C. DO NOT ALIQUOT

Clonality

Polyclonal

Ig Type

Rabbit IgG

Applications

ELISA, IHC, WB

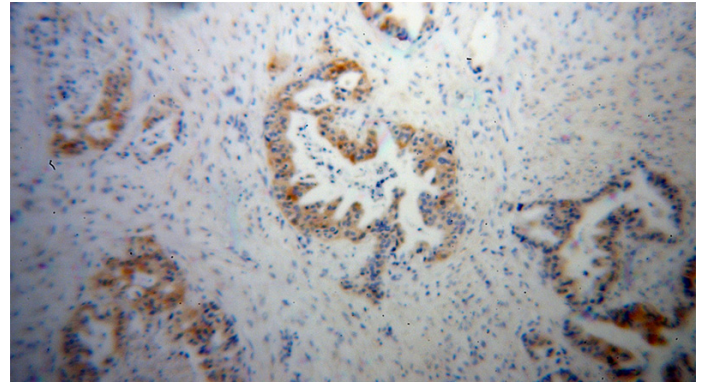
Dilutions

Recommended Dilution:

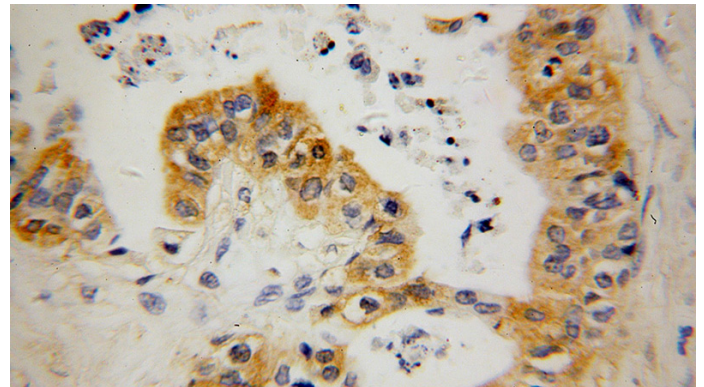
WB: 1:500-1:5000

IHC: 1:20-1:200

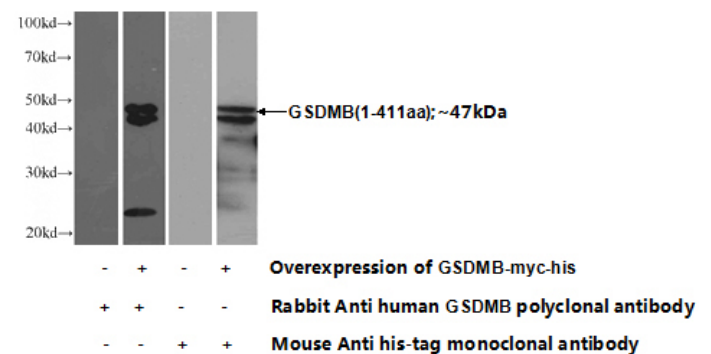
Validations



Immunohistochemical of paraffin-embedded human stomach cancer using Catalog No:111165(GSDMB antibody) at dilution of 1:50 (under 10x lens)



Immunohistochemical of paraffin-embedded human stomach cancer using Catalog No:111165(GSDMB antibody) at dilution of 1:50 (under 40x lens)



Transfected HEK-293 cells were subjected to SDS PAGE followed by western blot with Catalog No:111165(GSDMB Antibody) at dilution of

GSDMB antibody



Catalog Number: 111165

1:1000