

# EB1 antibody

Catalog Number: 110165

## Product name

EB1 antibody

Recommended Dilution:

WB: 1:500-1:5000

## Specificity

Human, Mouse; other species not tested.

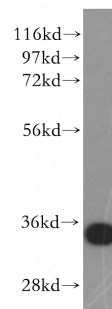
IP: 1:500-1:5000

IHC: 1:20-1:200

## Antibody description

EB1 Rabbit Polyclonal antibody. Positive WB detected in HeLa cells, A431 cells, Jurkat cells. Positive IP detected in HeLa cells, mouse thymus tissue. Positive IHC detected in human kidney tissue, human colon cancer tissue, human lung tissue, human placenta tissue, human skin tissue, human spleen tissue, human testis tissue. Observed molecular weight by Western-blot: 35 kDa

## Validations



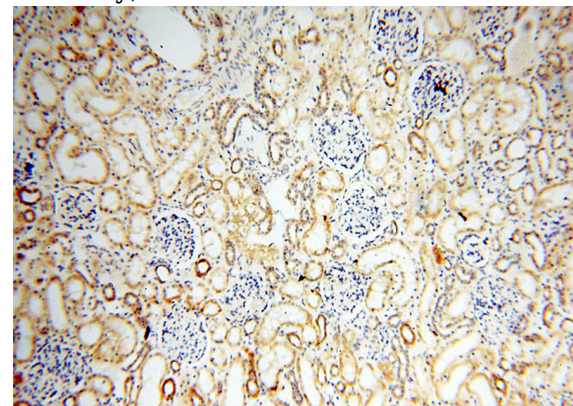
## Preparation

This antibody was obtained by immunization of EB1 recombinant protein (Accession Number: NM\_012325). Purification method: Antigen affinity purified.

HeLa cells were subjected to SDS PAGE followed by western blot with Catalog No:110165(MAPRE1 antibody) at dilution of 1:500

## Formulation

PBS with 0.02% sodium azide and 50% glycerol pH 7.3.



## Storage

Store at -20°C. DO NOT ALIQUOT

## Clonality

Polyclonal

Immunohistochemical of paraffin-embedded human kidney using Catalog No:110165(MAPRE1 antibody) at dilution of 1:100 (under 10x lens)

## Ig Type

Rabbit IgG

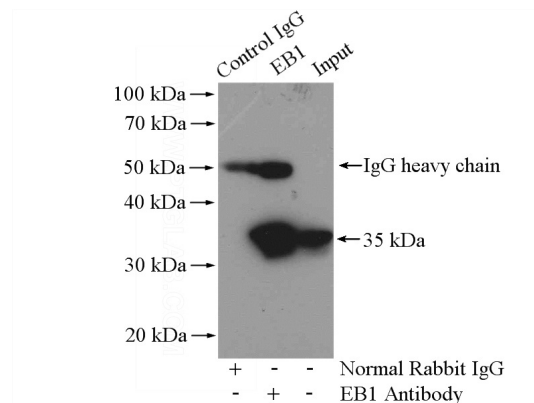
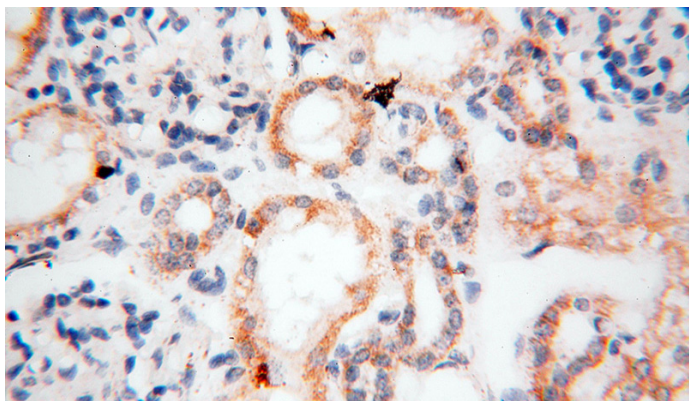
## Applications

ELISA, WB, IHC, IP

## Dilutions

# EB1 antibody

Catalog Number: 110165



Immunohistochemical of paraffin-embedded human kidney using Catalog No:110165(MAPRE1 antibody) at dilution of 1:100 (under 40x lens)

IP Result of anti-EB1 (IP:Catalog No:110165, 4ug; Detection:Catalog No:110165 1:1000) with HeLa cells lysate 1200ug.