

# Anti-SARA Rabbit antibody



Catalog Number: 167865

## Product name

Anti-SARA Rabbit antibody

## Specificity

Human, Rat

## Antibody description

SARA Rabbit monoclonal antibody

## Preparation

Antigen: A synthetic peptide of human SARA

## Formulation

50nM Tris-Glycine(pH 7.4), 0.15M NaCl,  
40%Glycerol, 0.01% sodium azide and 0.05% BSA

## Storage

Store at 4°C short term. Store at -20°C long term.  
Avoid freeze / thaw cycle.

## Clonality

Monoclonal

## Ig Type

Rabbit IgG

## Applications

WB, IHC-P, FC, IP

## Dilutions

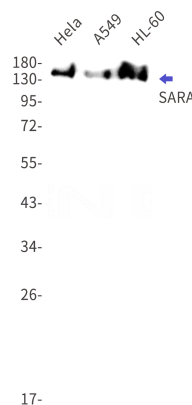
WB: 1/2000-1/10000

IHC: 1/50

FC: 1/20

IP: 1/20

## Validations



Western blot detection of SARA in HeLa, A549, HL-60 cell lysates using SARA Rabbit mAb(1:1000 diluted). Predicted band size: 156kDa. Observed band size: 156kDa.