

# Anti-EPHB2 antibody



Catalog Number: 105865

## Product name

Anti-EPHB2 antibody

## Immunogen

[Human EphB2/Eph Receptor B2 \(His Tag\) recombinant protein](#)

## Specificity

Human EPHB2 / Hek5

## Antibody description

Rabbit Monoclonal to Human EPHB2

## Preparation

This antibody was obtained from a rabbit immunized with purified, recombinant Human EPHB2 / Hek5 (rh EPHB2 / Hek5; NP\_059145.2; Met1-Leu543) and conjugated with PE under optimum conditions, the unreacted PE was removed.

## Formulation

Aqueous solution containing 0.5% BSA and 0.09% sodium azide

## Storage

This antibody is stable for 12 months from date of receipt when stored at 2°C-8°C. Protected from prolonged exposure to light. Do not freeze ! Sodium azide is toxic to cells and should be

disposed of properly. Flush with large volumes of water during disposal.

## Clonality

Monoclonal

## Ig Type

Rabbit IgG

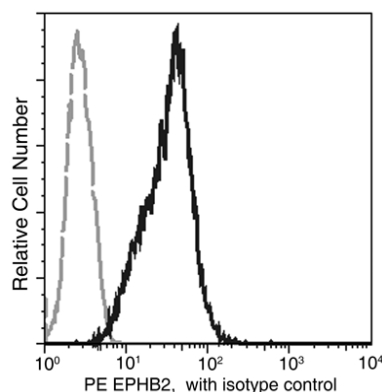
## Applications

FCM

## Dilutions

FCM

## Validations



EPHB2 / Hek5 Antibody (PE), Rabbit MAb, Flow cytometric

Flow cytometric analysis of Human EPHB2 expression in CoLo205 cells.