

Human Gliomedin / GLDN (Fc Tag) recombinant protein



Catalog Number: 502865

General Information

Protein Construction

A DNA sequence encoding the human GLDN (AAQ88511.1) (Met1-Gln427) was expressed with the Fc region of human IgG1 at the N-terminus.

Organism

Human

Expression Host

Human Cells

QC Testing

Purity

> 90 % as determined by SDS-PAGE.

Endotoxin

< 1.0 EU per μg protein as determined by the LAL method.

Stability

Samples are stable for up to twelve months from date of receipt at -70°C

Predicted N terminal

Glu

Molecular Mass

The recombinant human GLDN consists 687

amino acids and predicts a molecular mass of 74.3 kDa.

Formulation

Lyophilized from sterile PBS, pH 7.4.

1. 5 % trehalose and mannitol are added as protectants before lyophilization.

2. Please contact us for any concerns or special requirements.

Usage Guide

Storage

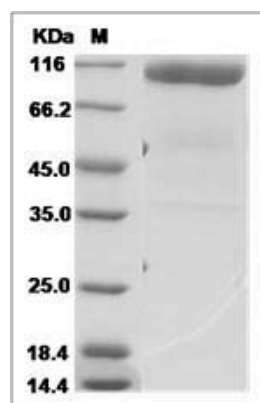
Store it under sterile conditions at -20°C to -80°C .

It is recommended that the protein be aliquoted for optimal storage. Avoid repeated freeze-thaw cycles.

Reconstitution

Adding sterile water, prepare a stock solution of 0.25 mg/ml. Concentration is measured by UV-Vis.

SDS-PAGE



Human Gliomedin / GLDN Protein (Fc Tag)