

# POT1 antibody

Catalog Number: 114065

## Product name

POT1 antibody

## Specificity

Human, Mouse; other species not tested.

## Antibody description

POT1 Rabbit Polyclonal antibody. Positive WB detected in HeLa cells, PC-3 cells. Positive IHC detected in human prostate cancer tissue. Observed molecular weight by Western-blot: 71 kDa

## Preparation

This antibody was obtained by immunization of POT1 recombinant protein (Accession Number: XM\_006715917). Purification method: Antigen affinity purified.

## Formulation

PBS with 0.1% sodium azide and 50% glycerol pH 7.3.

## Storage

Store at -20°C. DO NOT ALIQUOT

## Clonality

Polyclonal

## Ig Type

Rabbit IgG

## Applications

ELISA, WB, IHC

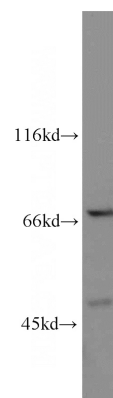
## Dilutions

Recommended Dilution:

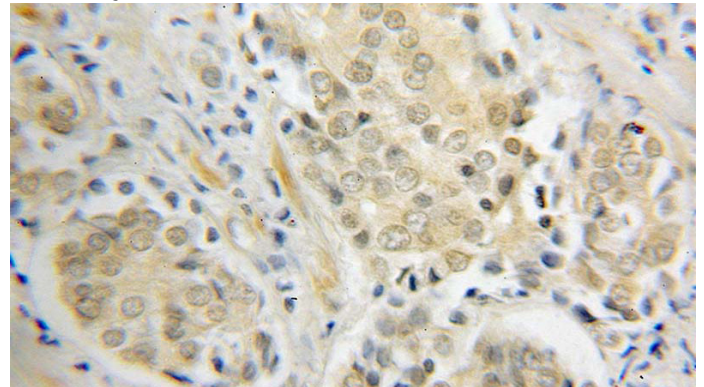
WB: 1:200-1:2000

IHC: 1:20-1:200

## Validations



HeLa cells were subjected to SDS PAGE followed by western blot with Catalog No:114065(POT1 antibody) at dilution of 1:500



Immunohistochemical of paraffin-embedded human prostate cancer using Catalog No:114065(POT1 antibody) at dilution of 1:100 (under 25x lens)