

GPLOW antibody

Catalog Number: 111065

Product name

GPLOW antibody

Specificity

human, mouse, rat; other species not tested.

Antibody description

GPLOW Rabbit Polyclonal antibody. Positive IHC detected in human breast cancer. Positive WB detected in HeLa cells, human liver tissue. Observed molecular weight by Western-blot: 52kd

Preparation

This antibody was obtained by immunization of GPLOW recombinant protein (Accession Number: NM_015698). Purification method: Antigen affinity purified.

Formulation

PBS with 0.02% sodium azide and 50% glycerol pH 7.3.

Storage

Store at -20°C. DO NOT ALIQUOT

Clonality

Polyclonal

Ig Type

Rabbit IgG

Applications

ELISA, WB, IHC

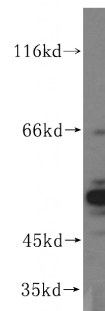
Dilutions

Recommended Dilution:

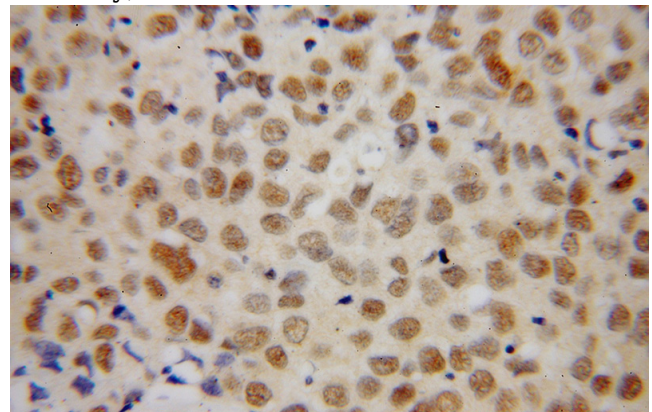
WB: 1:1000-1:10000

IHC: 1:20-1:200

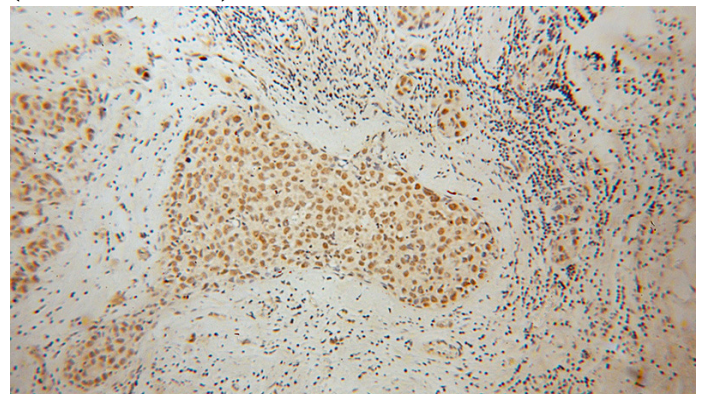
Validations



HeLa cells were subjected to SDS PAGE followed by western blot with Catalog No:111065(GPLOW antibody) at dilution of 1:500



Immunohistochemical of paraffin-embedded human breast cancer using Catalog No:111065(GPLOW antibody) at dilution of 1:100 (under 40x lens)



Immunohistochemical of paraffin-embedded human breast cancer using Catalog No:111065(GPLOW antibody) at dilution of 1:100 (under 10x lens)