

MFF Polyclonal Antibody



Catalog Number: 161065

Product name

MFF Polyclonal Antibody

Specificity

Human

Antibody description

Polyclonal antibody to MFF

Preparation

Antigen: Recombinant fusion protein containing a sequence corresponding to amino acids 15-170 of human MFF (NP_064579.3).

Formulation

PBS with 0.02% sodium azide, 50% glycerol, pH7.3.

Storage

Store at -20°C. Avoid freeze / thaw cycles.

Clonality

Polyclonal

Ig Type

Rabbit IgG

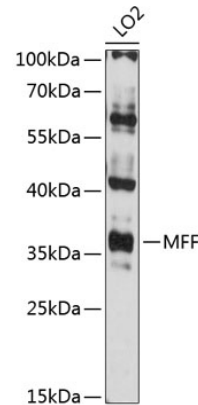
Applications

WB

Dilutions

WB 1:200 - 1:500

Validations



Western blot - MFF Polyclonal Antibody

Western blot analysis of extracts of LO2 cells, using MFF antibody at 1:3000 dilution. Secondary antibody: HRP Goat Anti-Rabbit IgG (H+L) at 1:10000 dilution. Lysates/proteins: 25ug per lane. Blocking buffer: 3% nonfat dry milk in TBST. Detection: ECL Enhanced Kit. Exposure time: 90s.