

# Anti-Ki67 / MKI67 antibody



Catalog Number: 100065

## Product name

Anti-Ki67 / MKI67 antibody

## Specificity

human MKI67

## Antibody description

Rabbit polyclonal to Ki67 / MKI67

## Preparation

Produced in rabbits immunized with A synthetic peptide corresponding to the sequence of the human Ki-67., and purified by antigen affinity chromatography.

## Formulation

0.2 µm filtered solution in PBS

## Storage

This antibody can be stored at 2°C-8°C for one month without detectable loss of activity. Antibody products are stable for twelve months from date of receipt when stored at -20°C to -80°C.

Preservative-Free.

Sodium azide is recommended to avoid contamination (final concentration 0.05%-0.1%). It is toxic to cells and should be disposed of

properly. Avoid repeated freeze-thaw cycles.

## Clonality

Polyclonal

## Ig Type

Rabbit IgG

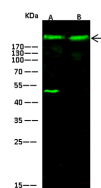
## Applications

WB

## Dilutions

WB: 10-20 µg/ml

## Validations



Items	Lanes	A	B
Sample (whole cell lysate)		Hela	SKBR3
Sample Volume (µg/lane)		30	30
Gel		13% SDS-PAGE reducing gel	
Recommended Concentration		10-20 µg/ml	
Secondary Antibody		Dylight 800-labeled Antibody to Rabbit IgG (H+L), at 1:5000 dilution.	
Explanation		Developed using Odyssey imaging system. Predicted band size : 135 kDa Observed band size : 135 kDa Additional bands at : 50 kDa (We are unsure as to the identity of these extra bands. They are possible non-specific bindings).	

Ki-67 Antibody, Rabbit PAb, Antigen Affinity Purified, Western blot