

DCP1B antibody



Catalog Number: 109755

Product name

DCP1B antibody

WB: 1:500-1:5000

IP: 1:200-1:2000

Specificity

Human, Mouse, Rat; other species not tested.

IHC: 1:20-1:200

IF: 1:20-1:200

Antibody description

DCP1B Rabbit Polyclonal antibody. Positive WB detected in human liver tissue, A549 cells, HeLa cells, Jurkat cells, mouse liver tissue, rat spleen tissue. Positive IP detected in HeLa cells. Positive IHC detected in human liver cancer tissue. Positive IF detected in A549 cells. Observed molecular weight by Western-blot: 68 kDa

Preparation

This antibody was obtained by immunization of DCP1B recombinant protein (Accession Number: NM_152640). Purification method: Antigen affinity purified.

Formulation

PBS with 0.02% sodium azide and 50% glycerol pH 7.3.

Storage

Store at -20°C. DO NOT ALIQUOT

Clonality

Polyclonal

Ig Type

Rabbit IgG

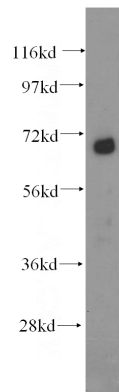
Applications

ELISA, WB, IHC, IF, IP

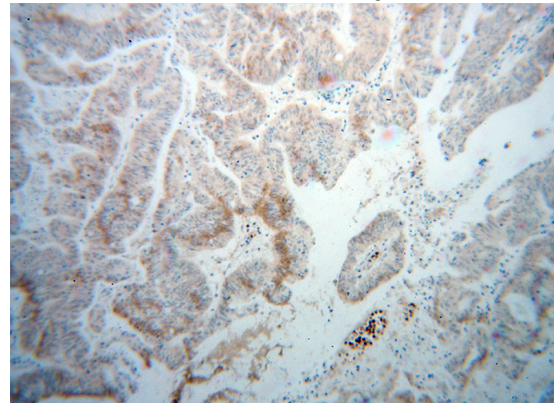
Dilutions

Recommended Dilution:

Validations



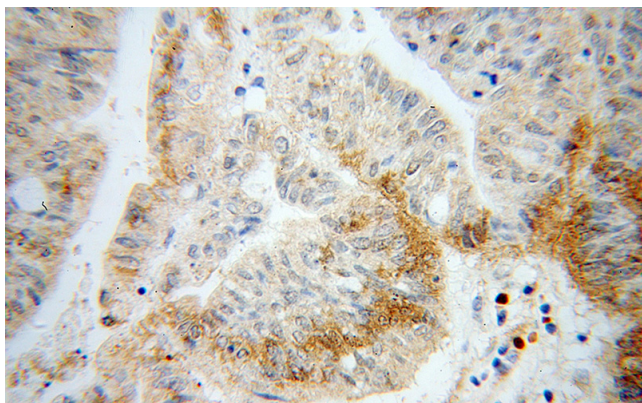
human liver tissue were subjected to SDS PAGE followed by western blot with Catalog No:109755(DCP1B antibody) at dilution of 1:500



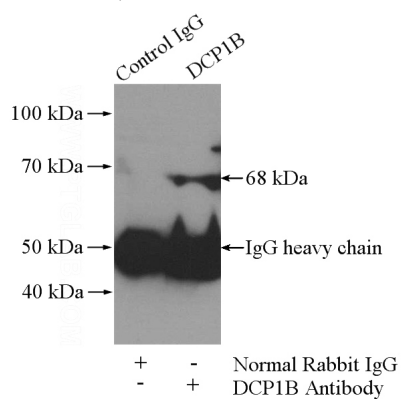
Immunohistochemical of paraffin-embedded human liver cancer using Catalog No:109755(DCP1B antibody) at dilution of 1:100 (under 10x lens)

DCP1B antibody

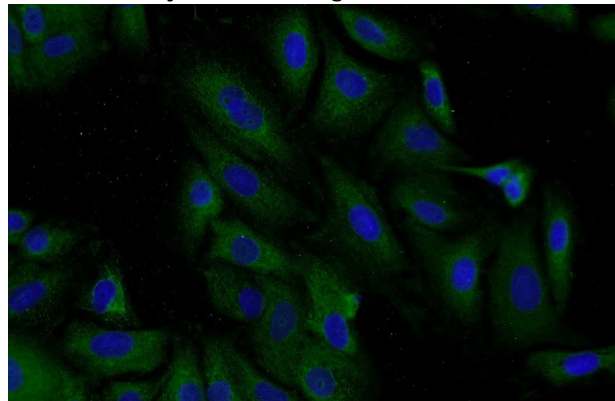
Catalog Number: 109755



Immunohistochemical of paraffin-embedded human liver cancer using Catalog No:109755(DCP1B antibody) at dilution of 1:100 (under 40x lens)



IP Result of anti-DCP1B (IP:Catalog No:109755, 4ug; Detection:Catalog No:109755 1:500) with HeLa cells lysate 1520ug.



Immunofluorescent analysis of A549 cells using Catalog No:109755(DCP1B Antibody) at dilution of 1:50 and Alexa Fluor 488-conjugated AffiniPure Goat Anti-Rabbit IgG(H+L)